

# Batch Template Project Wizard

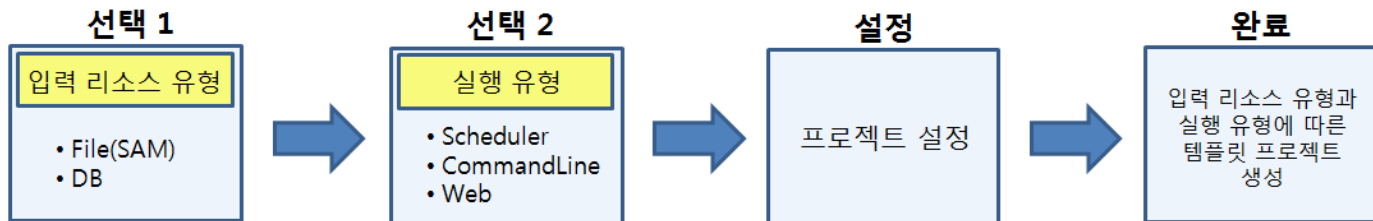
## Outline

This wizard provides automatic batch template project creation, including basic codes, for convenient development of batch application based on eGovFrame.

## Description

This wizard provides automatic creation of batch template projects based on eGovFrame that allows for the selection of batch template input resource type and execution type.

Batch Template Wizard Instructions

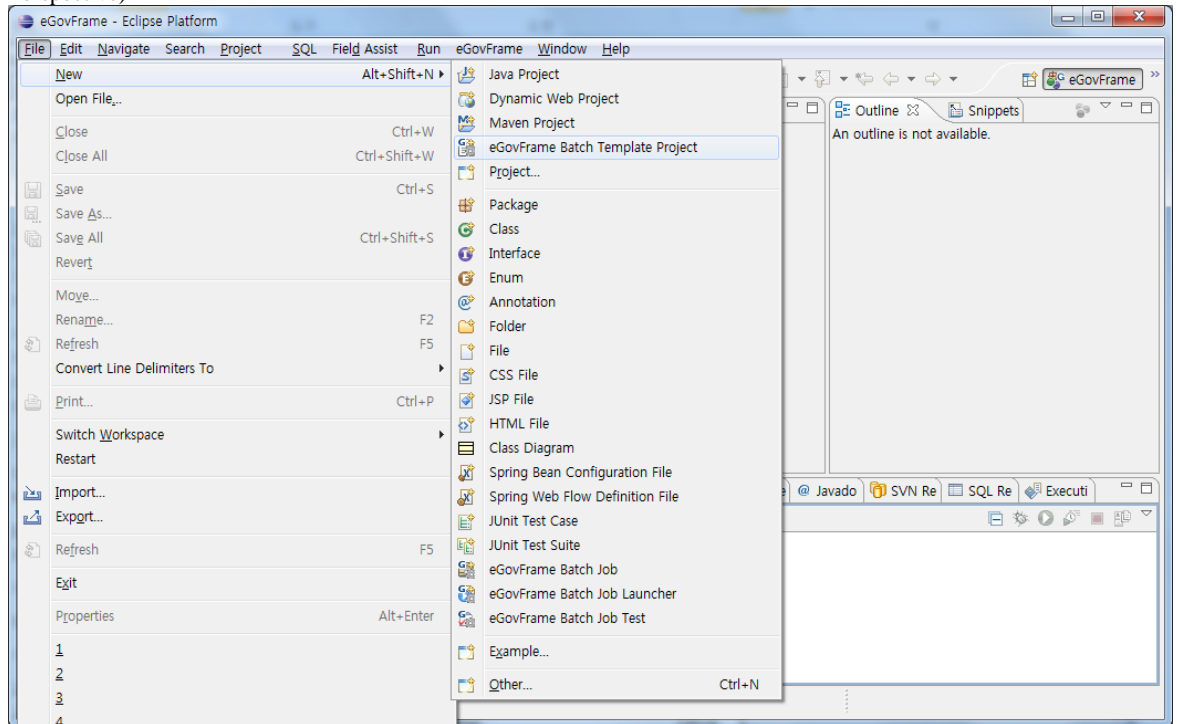


1. Classification by Batch Template **input resource type**
  - File (SAM): provides batch execution environment where input resource type is File (SAM). 'File (SAM) input resource type can be classified into two types: File to File and File to DB, as mentioned below.
    - File to File: Original data is imported from File (SAM) data and the batch execution output is exported as a file.
    - File to DB: Original data is imported from File (SAM) data and the batch execution output is exported as a database table.
  - DB: This provides a batch execution environment where the input resource type is a database table. 'DB input resource type can be classified into two types: DB to File and DB to DB, as mentioned below.
    - DB to File: Original data is imported from a database table and the batch execution output is exported as a file.
    - DA to DB: Original data is imported from a database table and the batch execution output is exported as a database table.
2. Classification according to batch template **Execution Type**
  - Scheduler: The Scheduler is a batch execution environment that can used to execute batch process at a set future date. [see \(EgovSchedulerRunner\)](#)
  - Command Line: Batch execution environment where the command prompt or a command execution file can be used to execute a batch process. [see \(EgovCommandLineRunner\)](#)
  - Web: Batch execution environment where batch process can be executed in a web-based application. [see \(EgovBatchRunner\)](#)

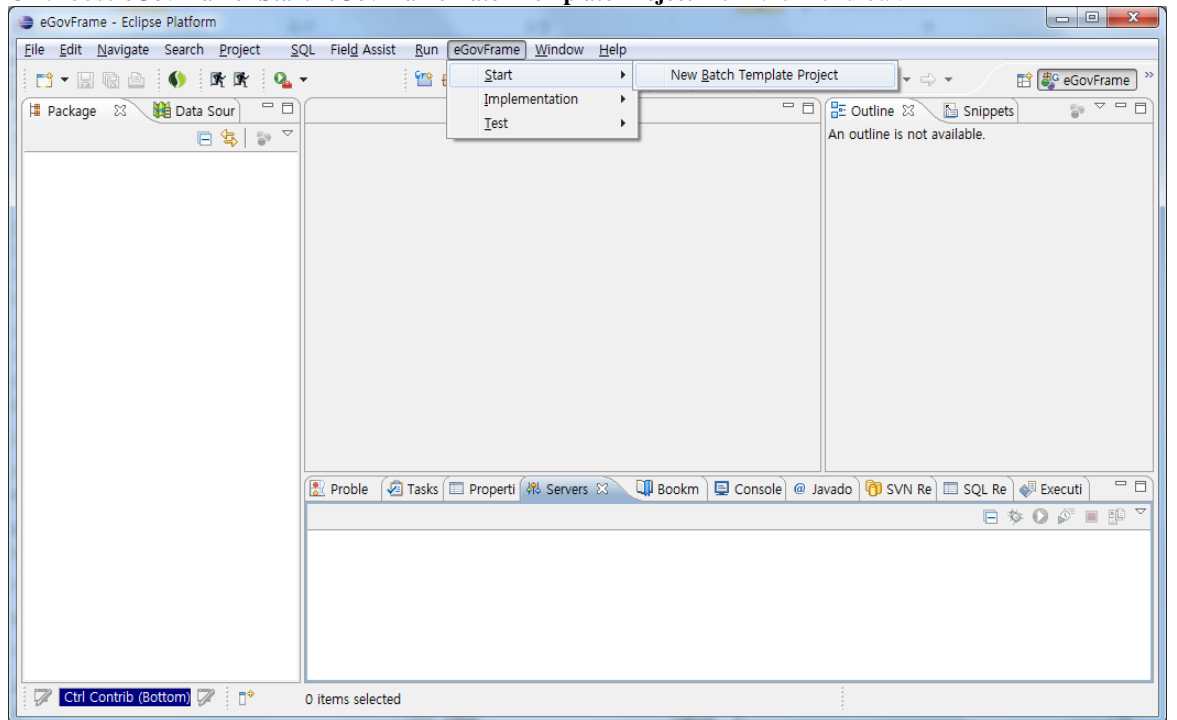
## Instructions

1. Starting Batch Template Wizard

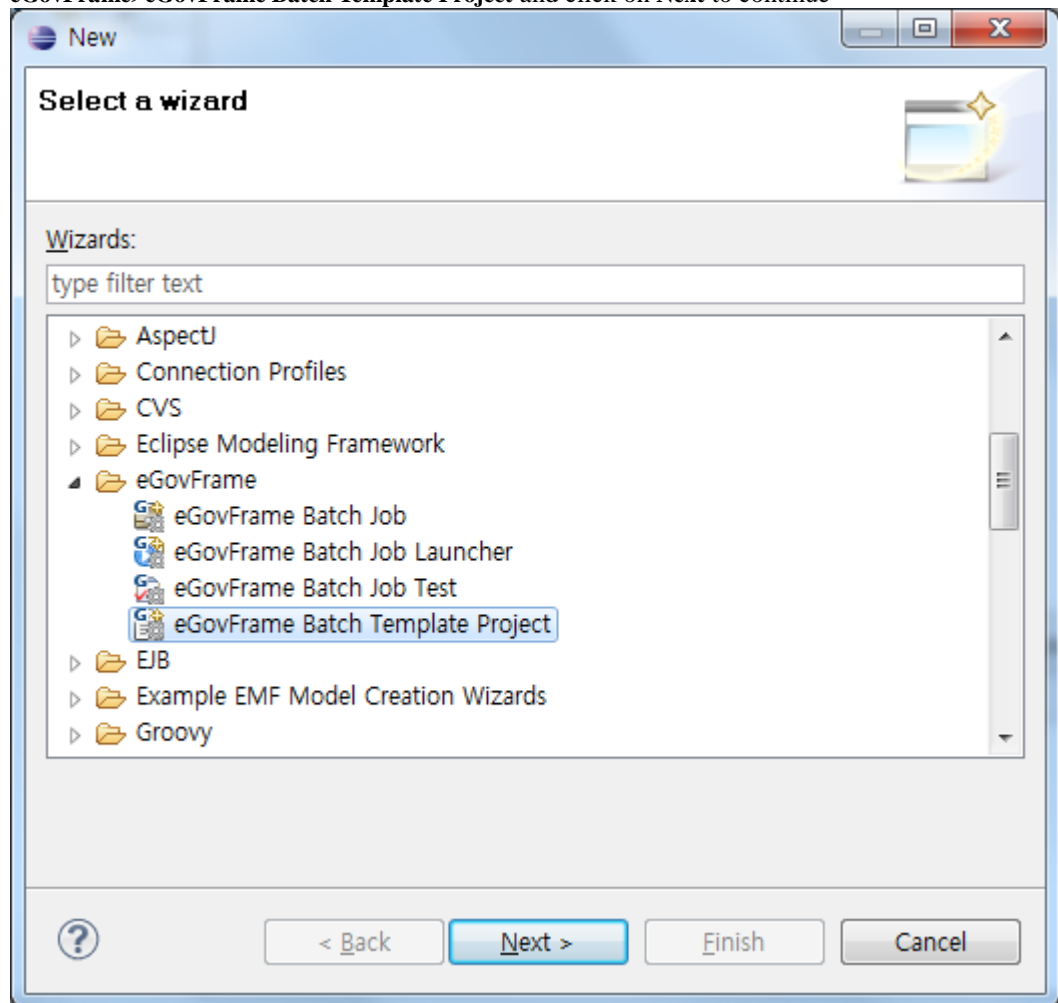
- Choose **File>New>eGovFrame Batch Template Project** from the menu bar. (Only in eGovFrame Perspective)



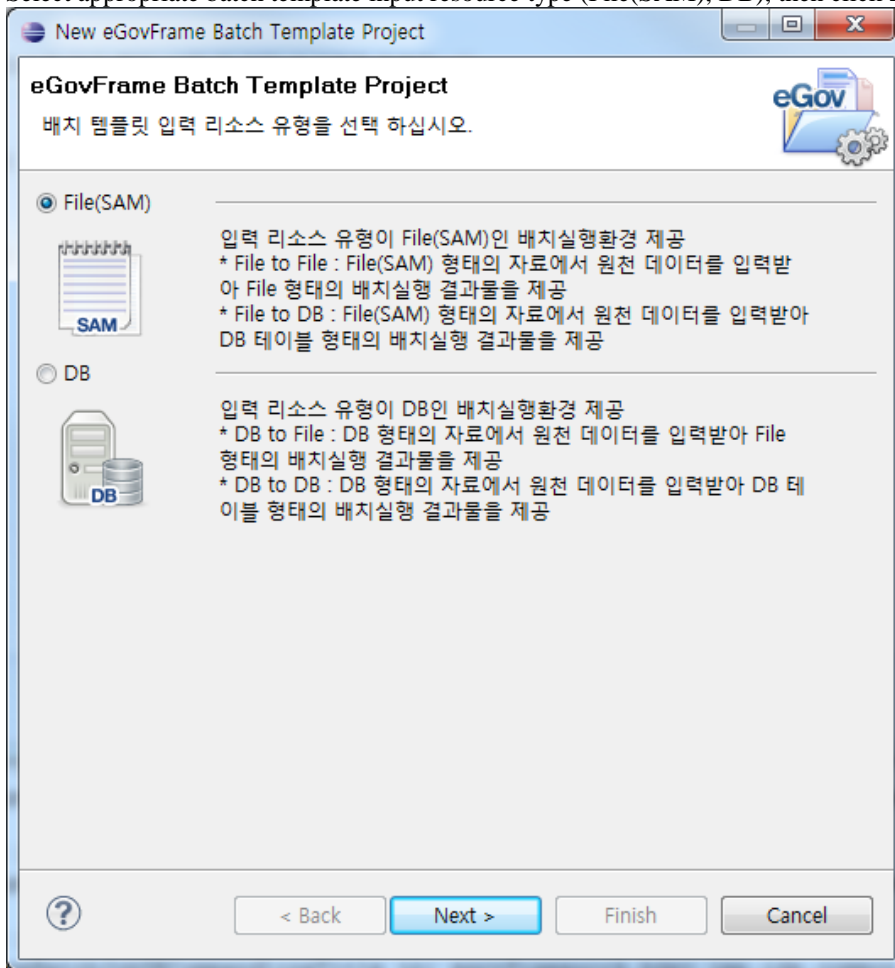
- Or choose **eGovFrame>Start>eGovFrame Batch Template Project** from the menu bar.



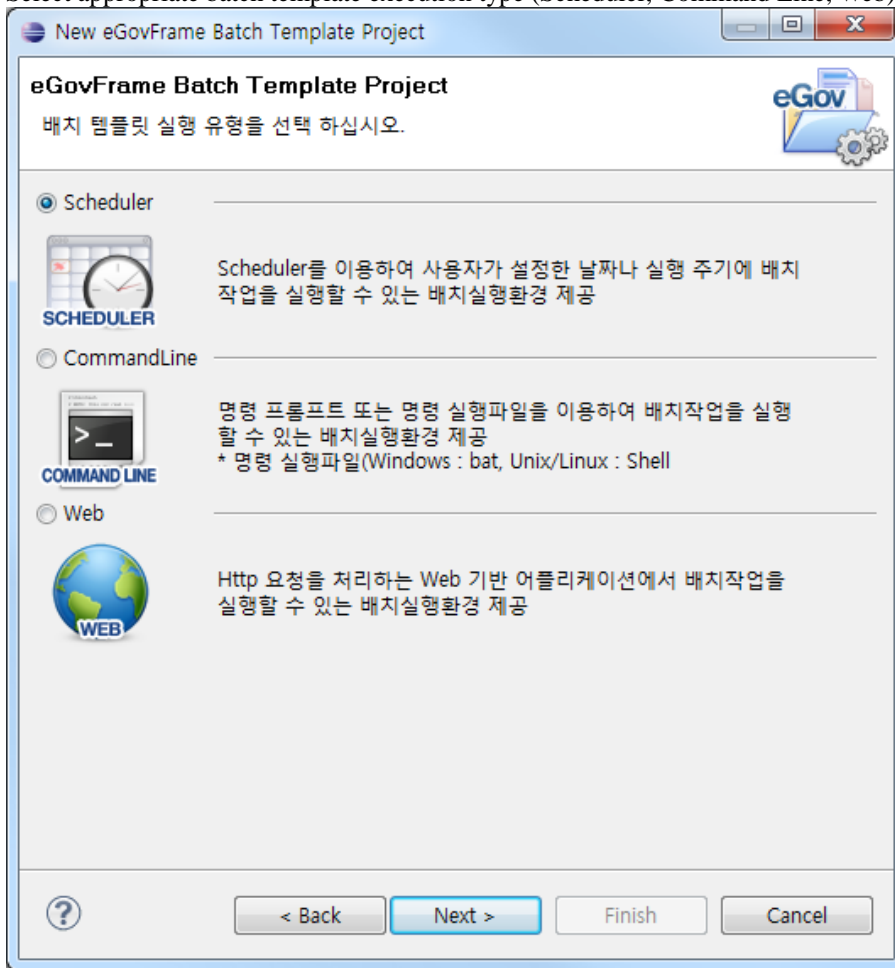
- You can also use the hotkey **Ctrl+N** to access the "create new" wizard, and choose **eGovFrame>eGovFrame Batch Template Project** and click on **Next** to continue



2. Select appropriate batch template input resource type (File(SAM), DB), then click Next.



3. Select appropriate batch template execution type (Scheduler, Command Line, Web), then click Next.



4. Continue the configuration of project setting steps of the batch template wizard in accordance with the resource type (File(SAM), DB) and execution type(Scheduler, Command Line, Web) designated in steps 2 and 3 above.

(Continue)

Step 2	Step 3	Project Settings(Continued)
File(SAM)	Scheduler	<a href="#">See Next Step</a>
	Command Line	<a href="#">See Next Step</a>
	Web	<a href="#">See Next Step</a>
DB	Scheduler	<a href="#">See Next Step</a>
	Command Line	<a href="#">See Next Step</a>
	Web	<a href="#">See Next Step</a>