

Common Component

Summary

This guide discusses the create common component wizard for installing 219 kinds of eGovFrame web common components.

Description

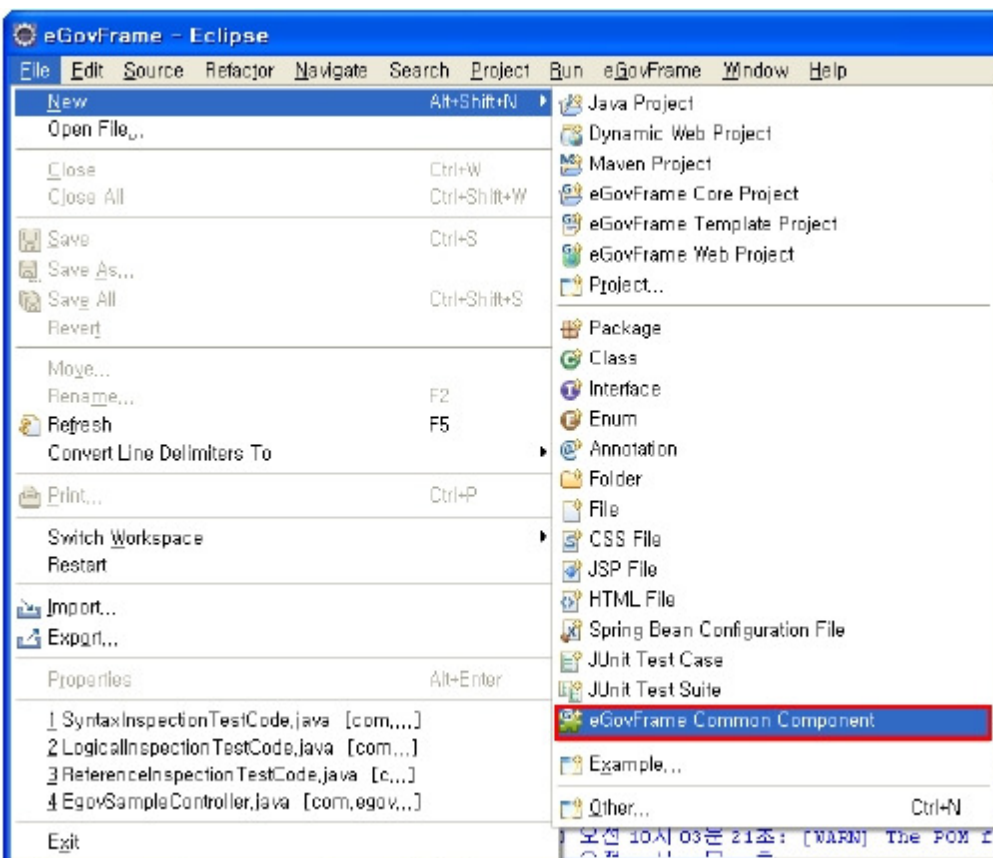
The create common component wizard provides a way to copy over common component-related files, and configure related databases and create database tables for eGovFrame projects.

Manual

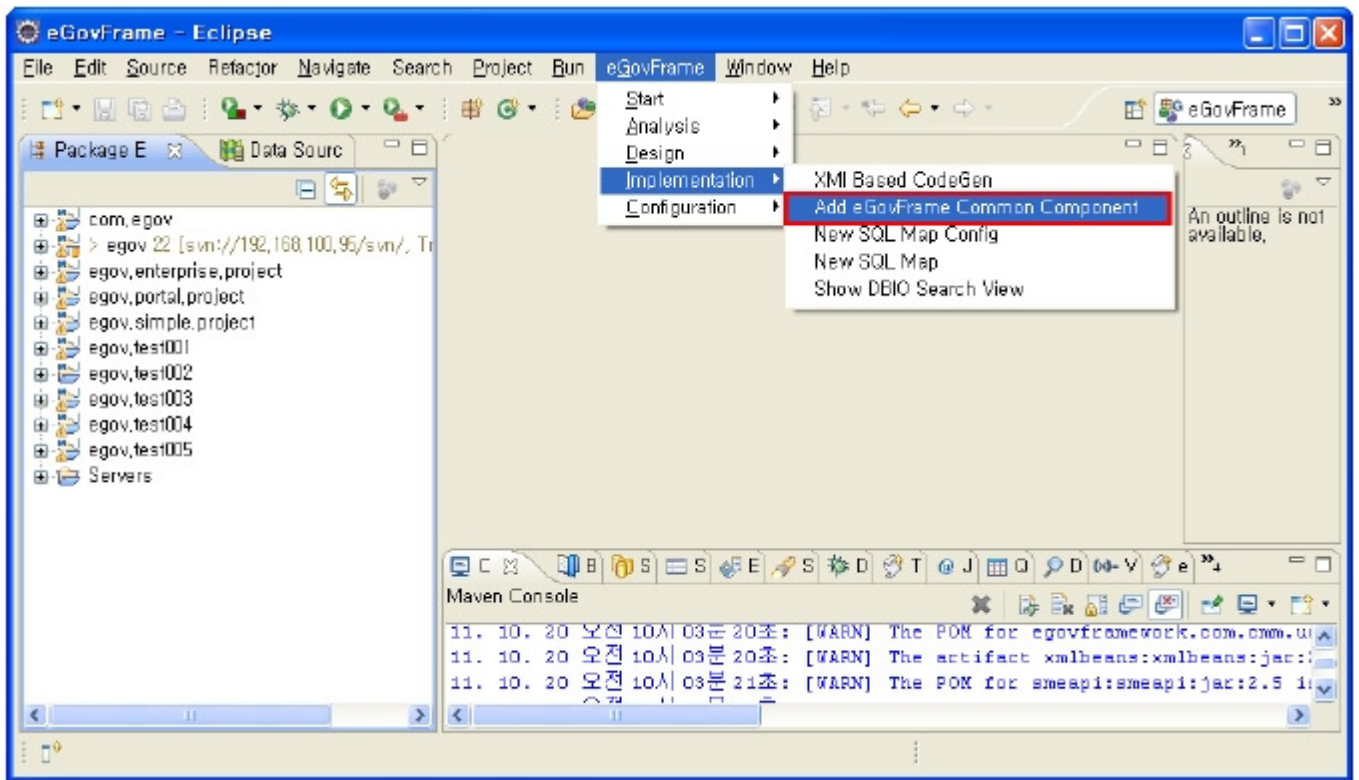
Creating components

Create common component wizard

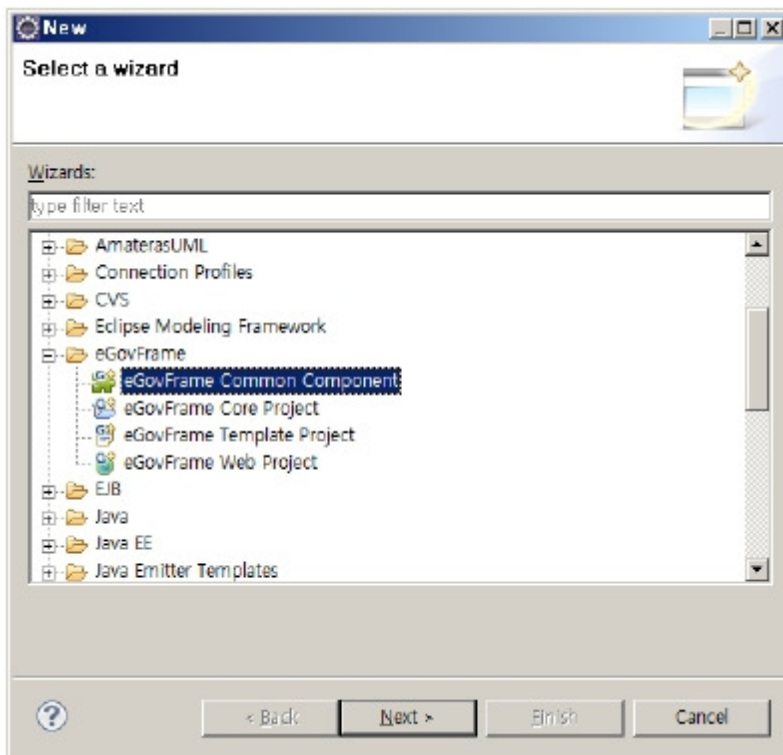
1. In the eGovFrame Perspective, choose File > New > eGovFrame Common Components.



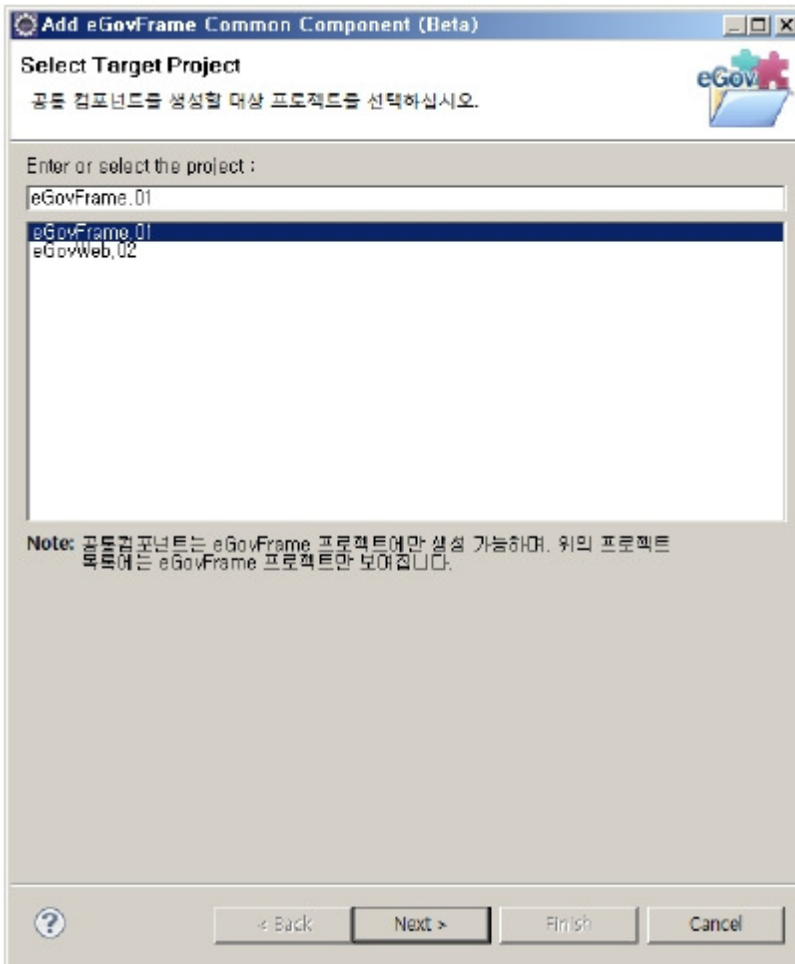
Also, you can choose eGovFrame > Implementation > Add eGovFrame Common Component menu.



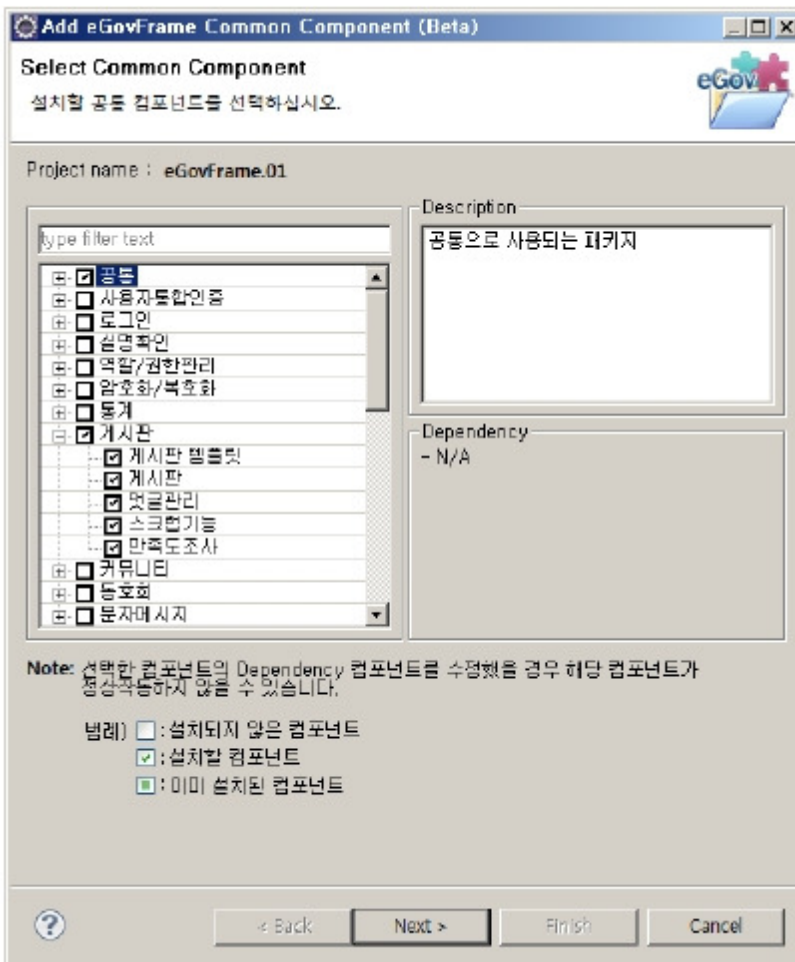
Also, you can choose eGovFrame > eGovFrame Common Component, and click Next.



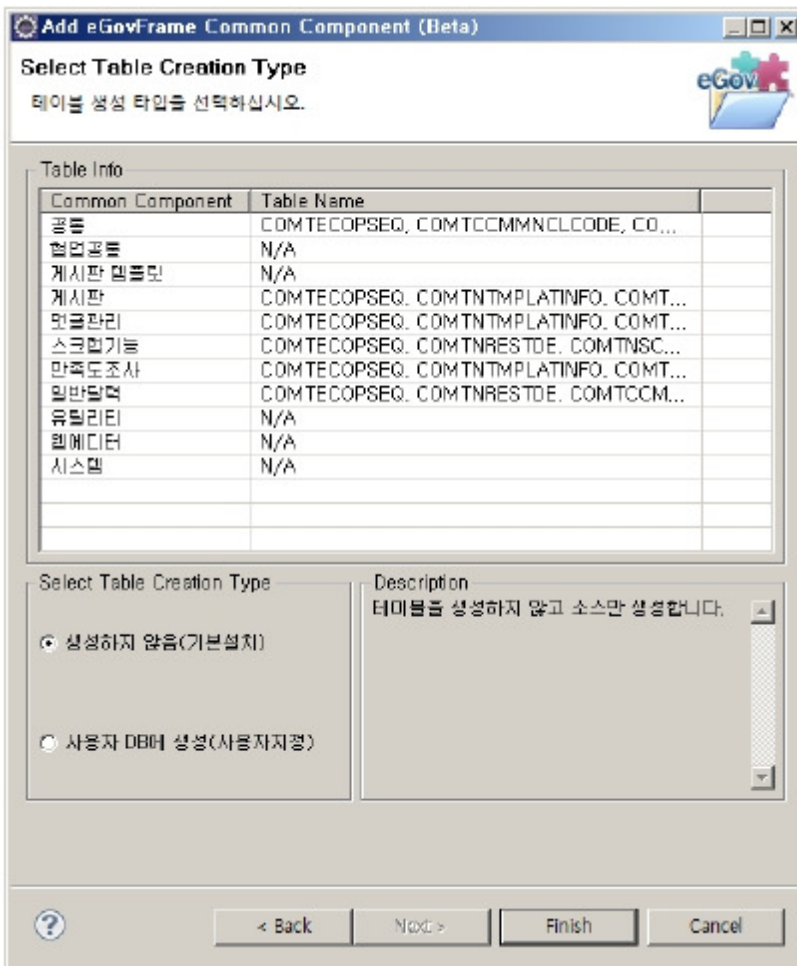
2. Choose an eGovFrame project, then click Next..



3. Choose all of your desired components from the list, and click Next.

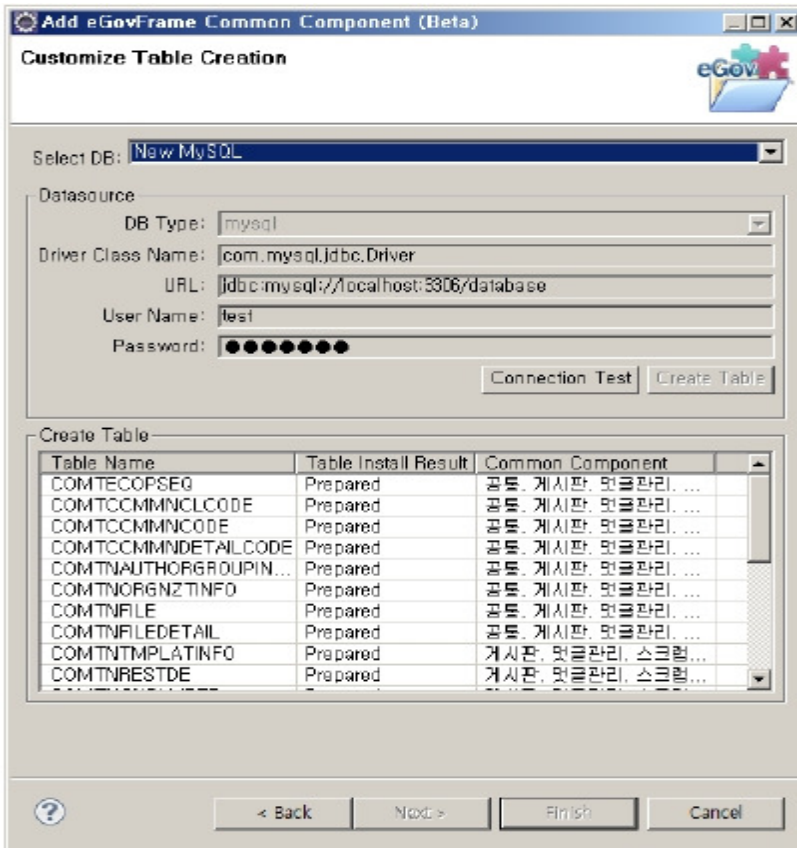


4. Confirm the components you chose, and then choose any table you want to install. (For default settings just click Finish.)



✓ Note: By default, common components support four types of databases - MySQL, Oracle, Tiberio and Altibase - so if you want to use other database, you must edit the datasource settings and tune the sql queries to work on the database.

5. Choose one of the databases from the Data Source Explorer, run Connection Test, and Create Table, and then click Finish.
(You can continue this procedure only if you entered the Custom Selection within the page of Select Table Creation Type.)



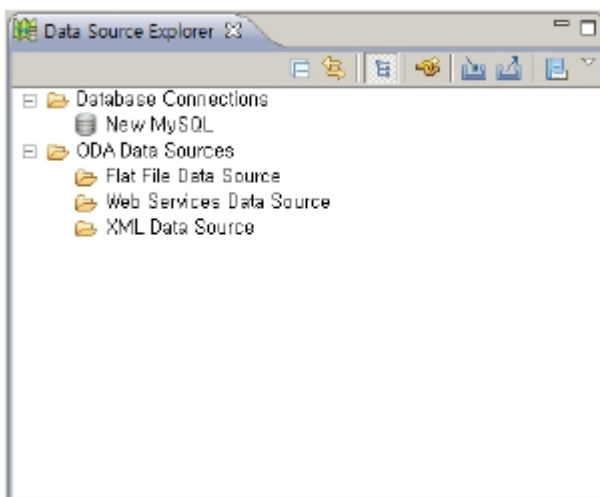
Customize Table Creation page

Option	Description	Default value
Select DB	Load the database information from the Data Source Explorer	Blank, or from globals. properties of the project

✓ Note: If there are no eGovFrame projects created beforehand, you must do so first, by closing the wizard, and creating a project, before you can run the wizard successfully.

✓ Note: Only the source codes are copied over by default. On the other hand, if you choose the Custom Selection, you must also choose one of your databases from Data Source Explorer and create a table.

✓ Note: If you have not registered a database in the Data Source Explorer, close the wizard, and register a database first.



Note: Any database other than the default supported databases needs its tables to be manually created by the user.

✓ Note: The templates are created using the common components, which means that if you install a common component on top of the project you created with a template, the bean ID can overlap. In this case, you need to modify the bean ID.

✓ If you are re-installing a common component, it overwrites any previous contents.

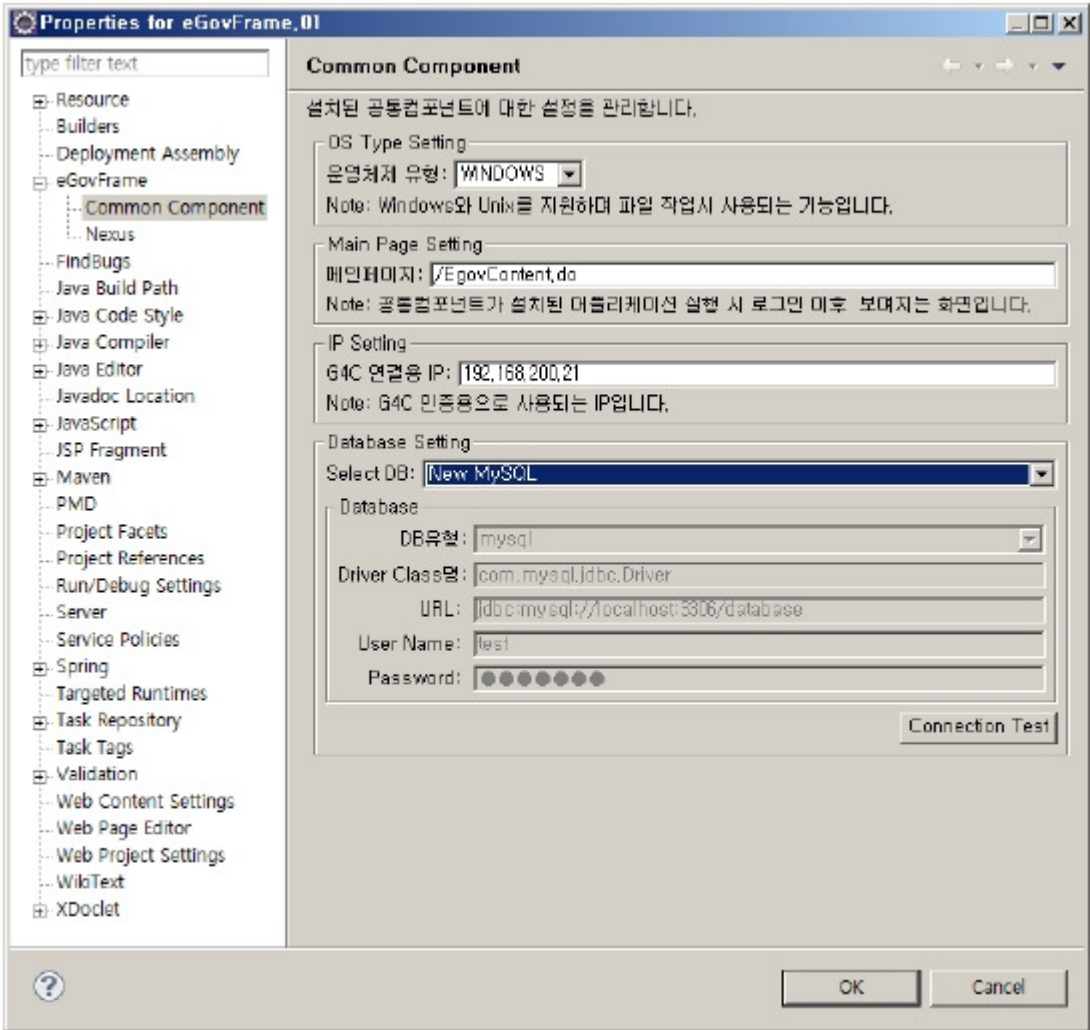
✓ Note: you need to refer to the jsp file that is set as the welcome-file-list inside the [web.xml](#), and from there set the Controller's /index.do appropriately.

✓ Note: If Maven fails after installing common components, you need to install third party libraries manually.

Configuring common components

Common components configuration tool

1. Right-click on the eGovFrame project, then choose Properties > eGovFrame > Common Component.



Common Component page

Option	Description	Default
Type of operation system	Select user's operation system.	Refer to globals.properties within the project generated n installing the Common Component
Main Page	Shows the start screen in operation after installing selected Common Component	Refer to globals.properties within the project generated n installing the Common Component
IP for G4C connection	Shows IP for G4C certification.	Refer to globals.properties within the project generated n installing the Common Component
Select DB	The DB information chosen in installation of Common Component among the registered DB on the Data Source Explorer is selected.	Refer to globals.properties within the project generated n installing blank or the Common Component

- ✓ Note: If Select DB was blank, double-check your Data Source Explorer setting.
- ✓ Note: Non-default database types other than the four - MySQL, Oracle, Tiberio and Altibase - are not managed by the common component configuration tool.