

DBIO Editor

Summary

DBIO stands for DataBase Input/Output and is a standard way to access the eGovFrame IDE's databases. It lets you connect to databases in a standardized API and also presents an abstraction of databases. The eGovFrame's DBIO Editor enables multiple features useful for modifying DBIO settings.

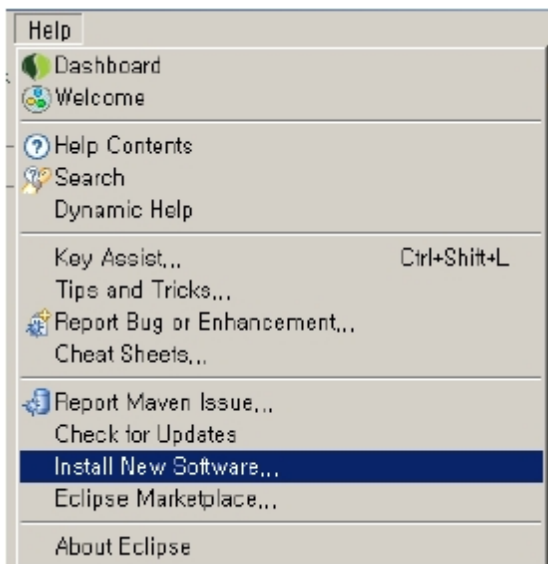
Main features are as below.

- SQL MAP Config File editor: enables editing DB connections and SQL MAP File list information.
- SQL MAP File Editor : enables editing the query information, and parameter result handling.
- Data Source Explorer : database source configuration, and searching for data source' child objects.
- DBIO Search View : enables searching for query IDs within SQL map files.

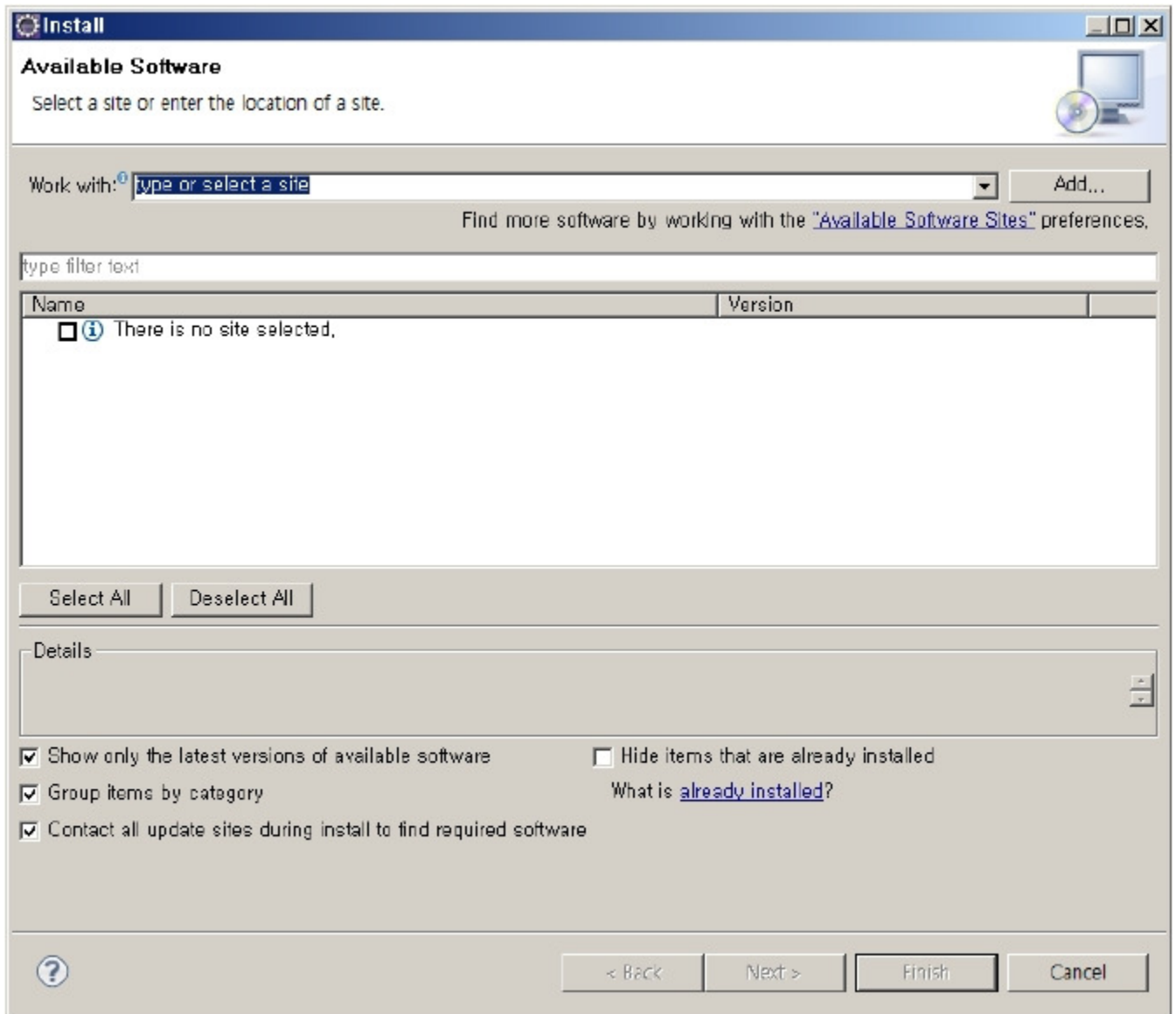
Environmental settings

In order to use the DBIO Editor, the eGovFrame DBIO has to be updated within the Eclipse, as below.

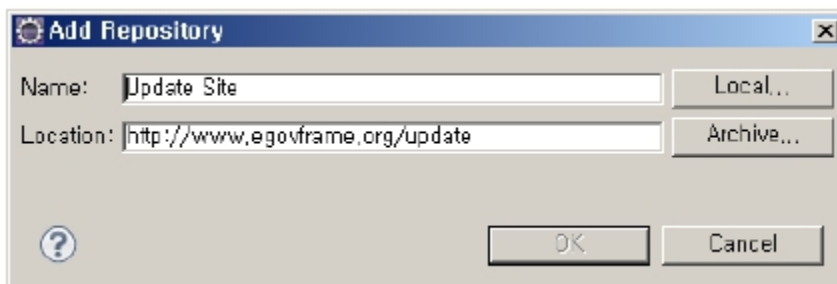
1. Select Help > Software Updates > Install New Software... from the Eclipse menu.



2. Click the Add... button on the right of the Available Software list.



3. In the Add Repository dialog, enter "http://www.egovframe.go.kr/update [http://www.egovframe.go.kr/update]" into the location field, and click the OK button.



4. The URL entered above will be added to the Available Software list.
5. Choose the entry, or any of the sub-entries.
6. Click on the Finish button on the right of the Available Software list.

