

Mobile Common Component

Summary

This guide discusses a Creation Wizard for installing 30 Mobile Components such as boards, communities and online participation ported from existing web common components in the eGovFrame and 10 types of Mobile Common Components

Description

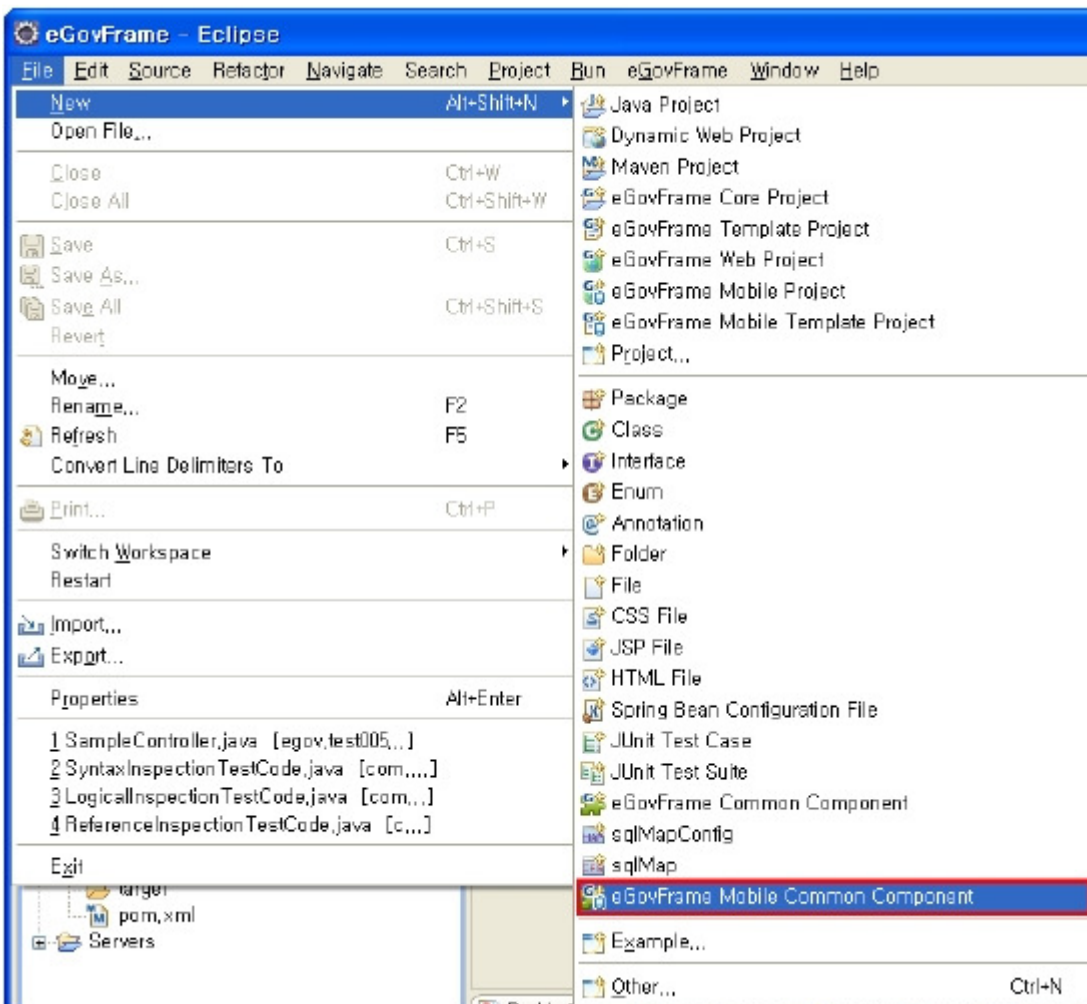
This tool provides the Mobile Common Component Creation Wizard for mobile projects based on eGovFrame. The wizard offers a feature to copy related files, database setting and create tables for mobile common component.

Manual

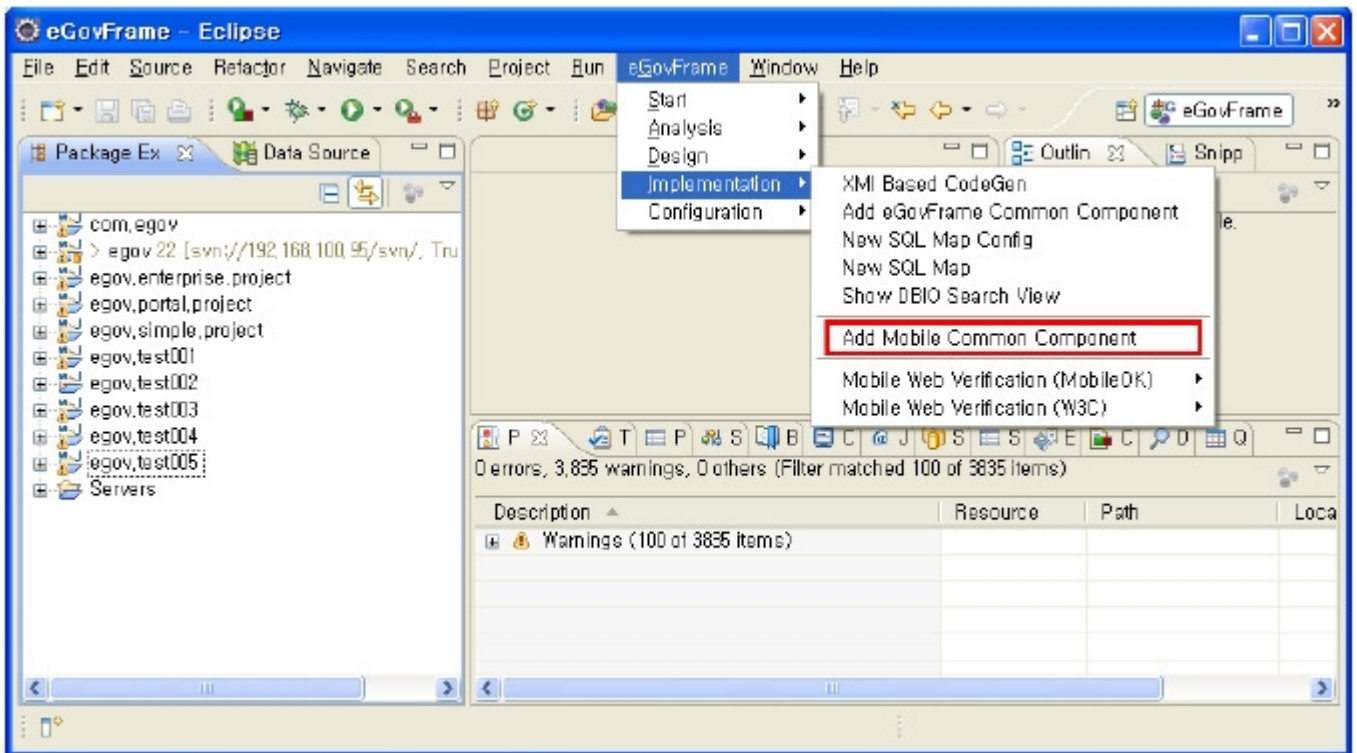
Creating Mobile Common Component

Mobile Common Component Creation Wizard

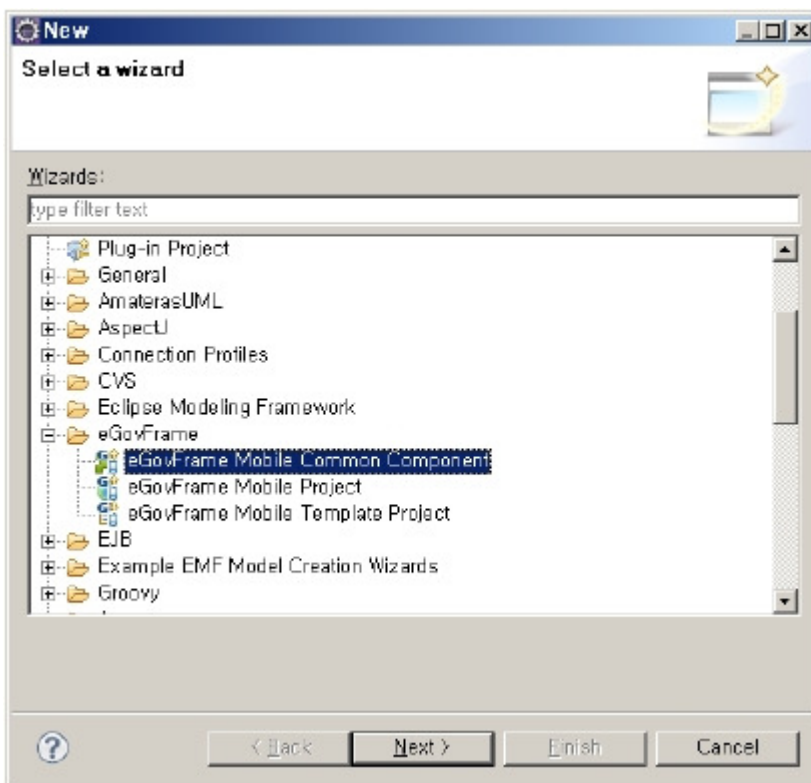
1. Select File > New > eGovFrame Mobile Common Component from Menu bar. (Only if the Mobile IDE is updated and Perspective is set to eGovFrame.)



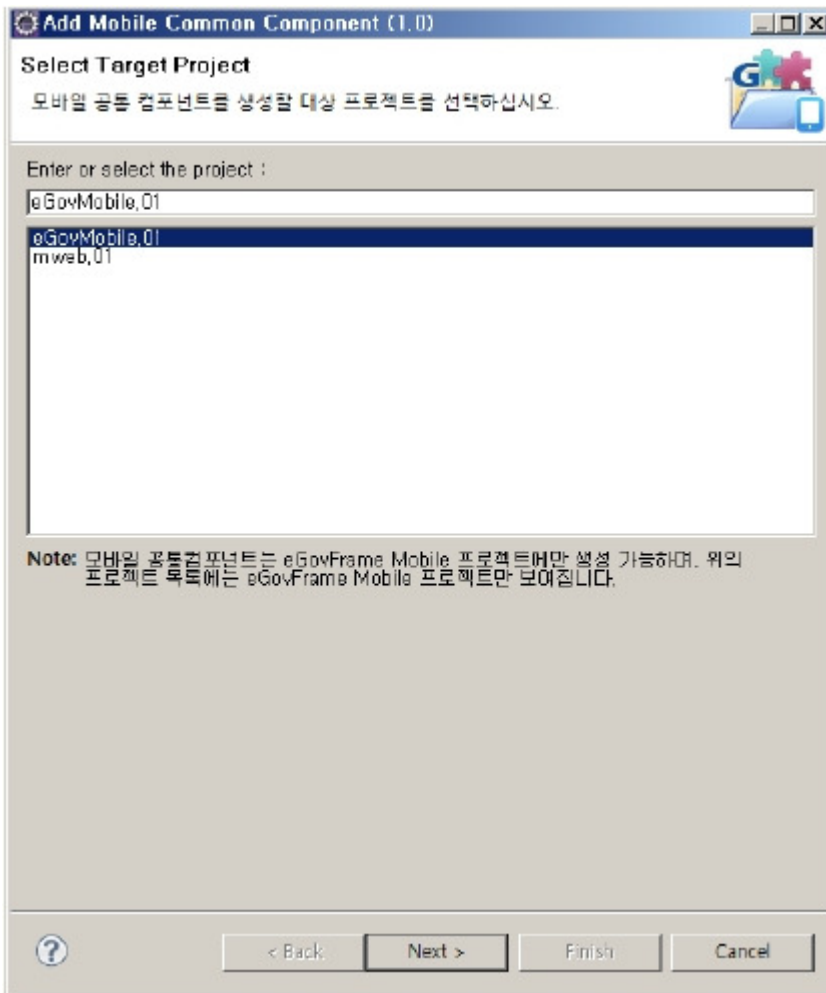
Or you can select eGovFrame > Implementation > Add Mobile Common Component. (Only if the Mobile IDE is updated and Perspective is set to eGovFrame)



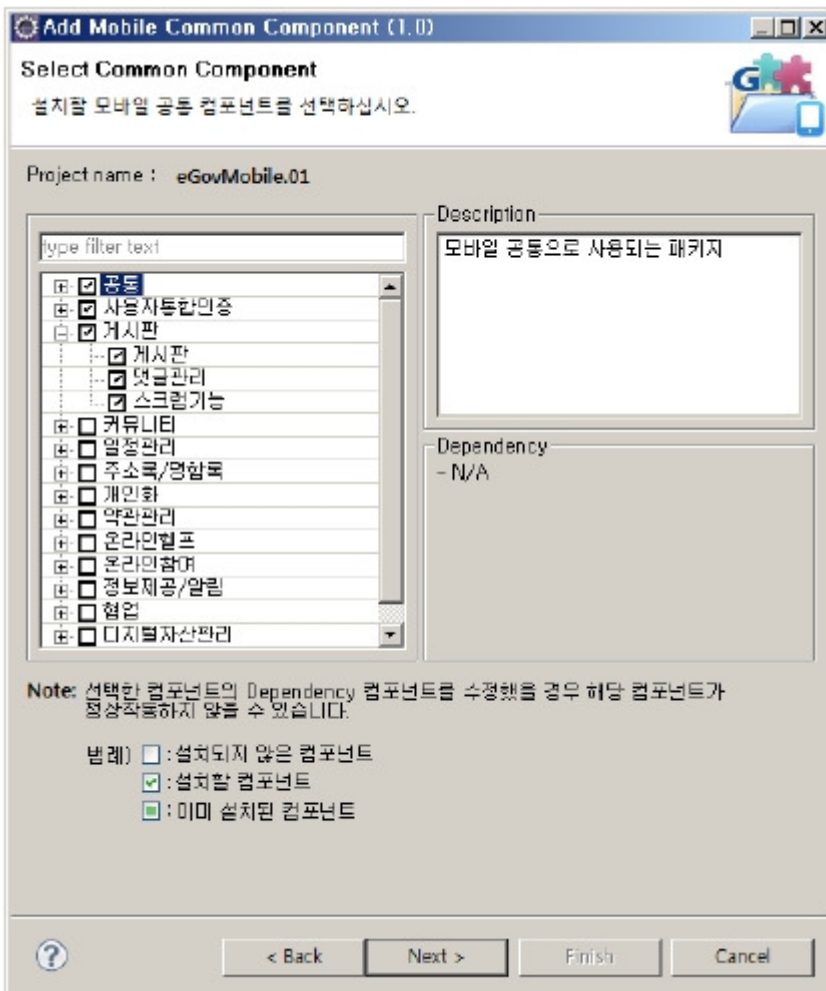
Otherwise, use Ctrl+N key combo to launch a New Wizard dialog, select eGovFrame > eGovFrame Mobile Common Component, and click the Next button.



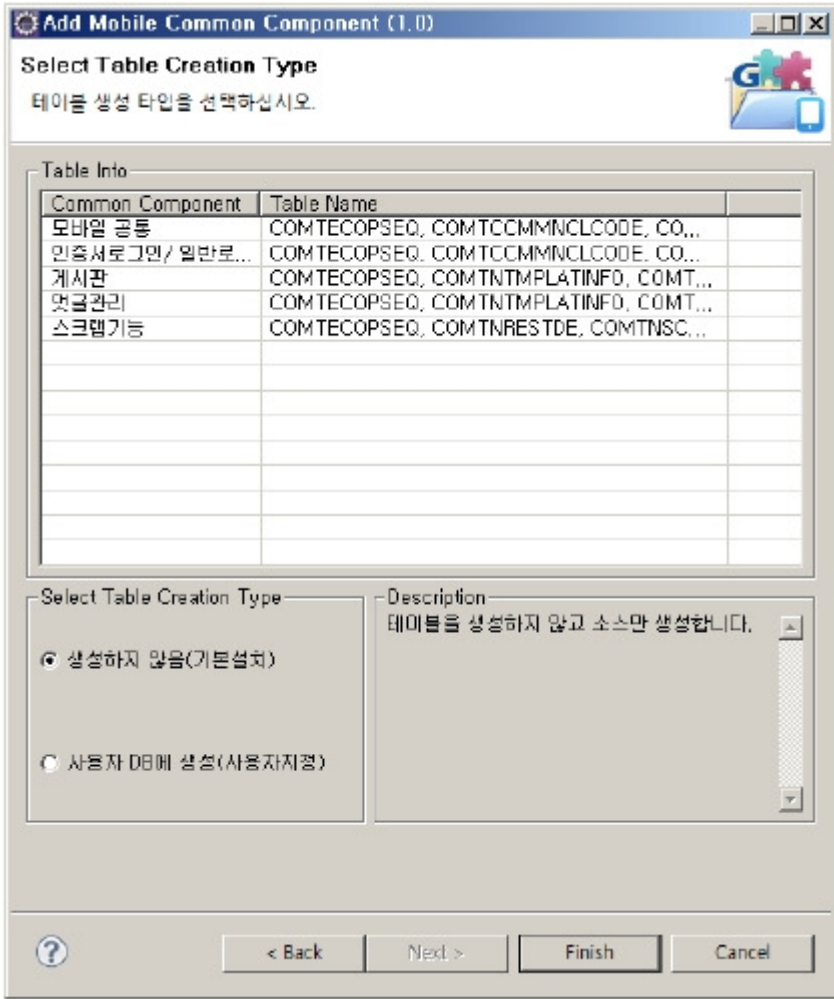
2. Select a target project based on eGovFrame, and click the Next button.



3. Select the desired Common Component, and click the Next button.

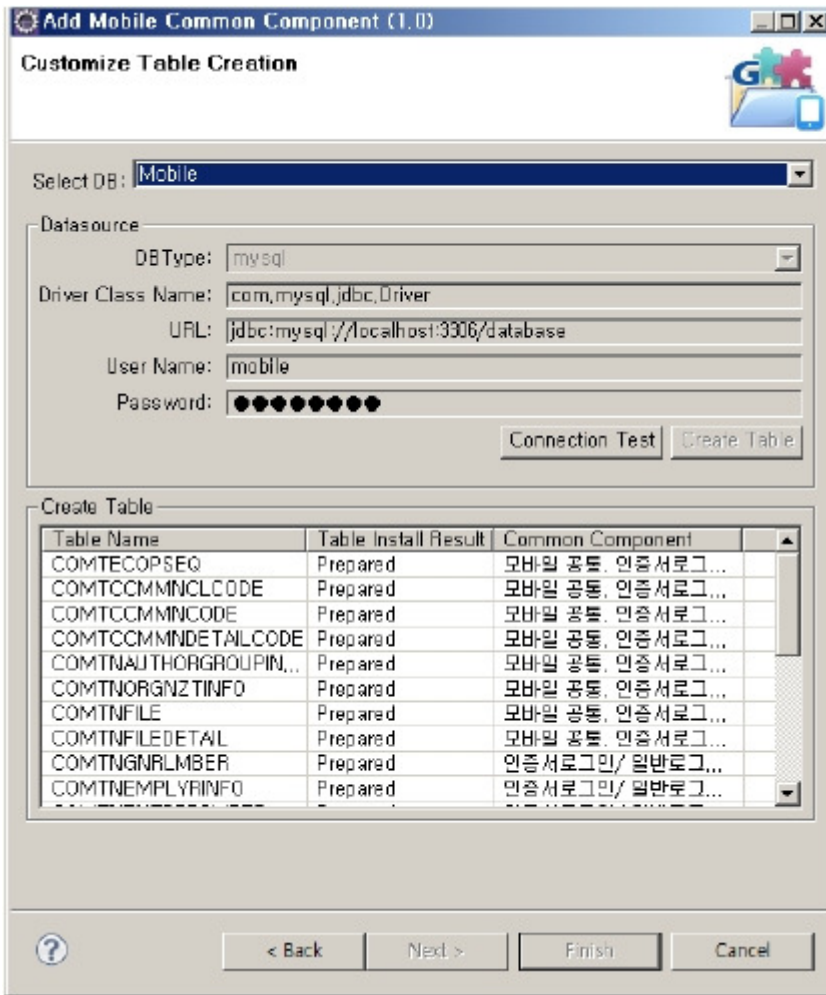


4. Check the table info, and select table creation type. (For default installation, just click the Finish button.)



✓ Note: Common component supports 4 types of databases (MySql, Oracle, Tiberio and Altibase). In order to use other types of DB, change Datasource setting and update sql command to work with specified DB.

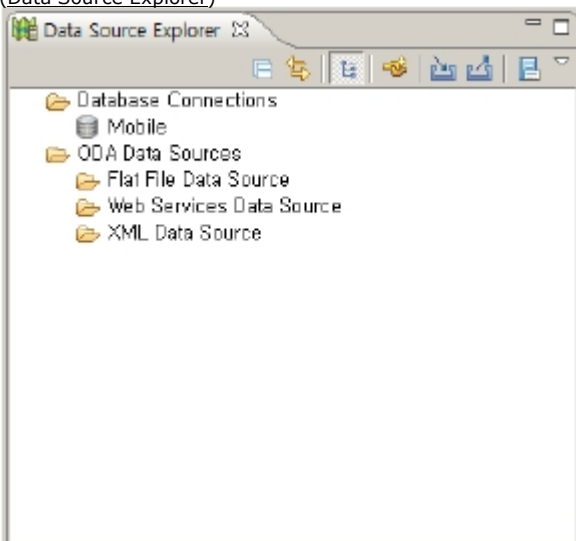
5. Select the DB info from registered users in the Datasource Explorer, run connection test and create table, and click the Finish button. (Available only when the user-defined option is selected for "Select Table Creation Type" in the previous page.)



Customize Table Creation Page

Options	Description	Default
Select DB	Fetch User DB Info registered in Datasource Explorer	Empty or refer to globals.properties within the project

- ✓ Note: If there isn't any existing eGovFrame based mobile project, close the Wizard and create a new mobile project. ([Create a mobile project based on eGovFrame](#))
- ✓ Note: If the default installation is selected, sources are created only without any table. If user-defined option is selected, create a table upon selected DB from the registered info in the Datasource Explorer.
- ✓ Note: If there isn't any registered DB info in the Datasource Explorer, close the Wizard and the register user DB info in the Datasource Explorer. ([Data Source Explorer](#))

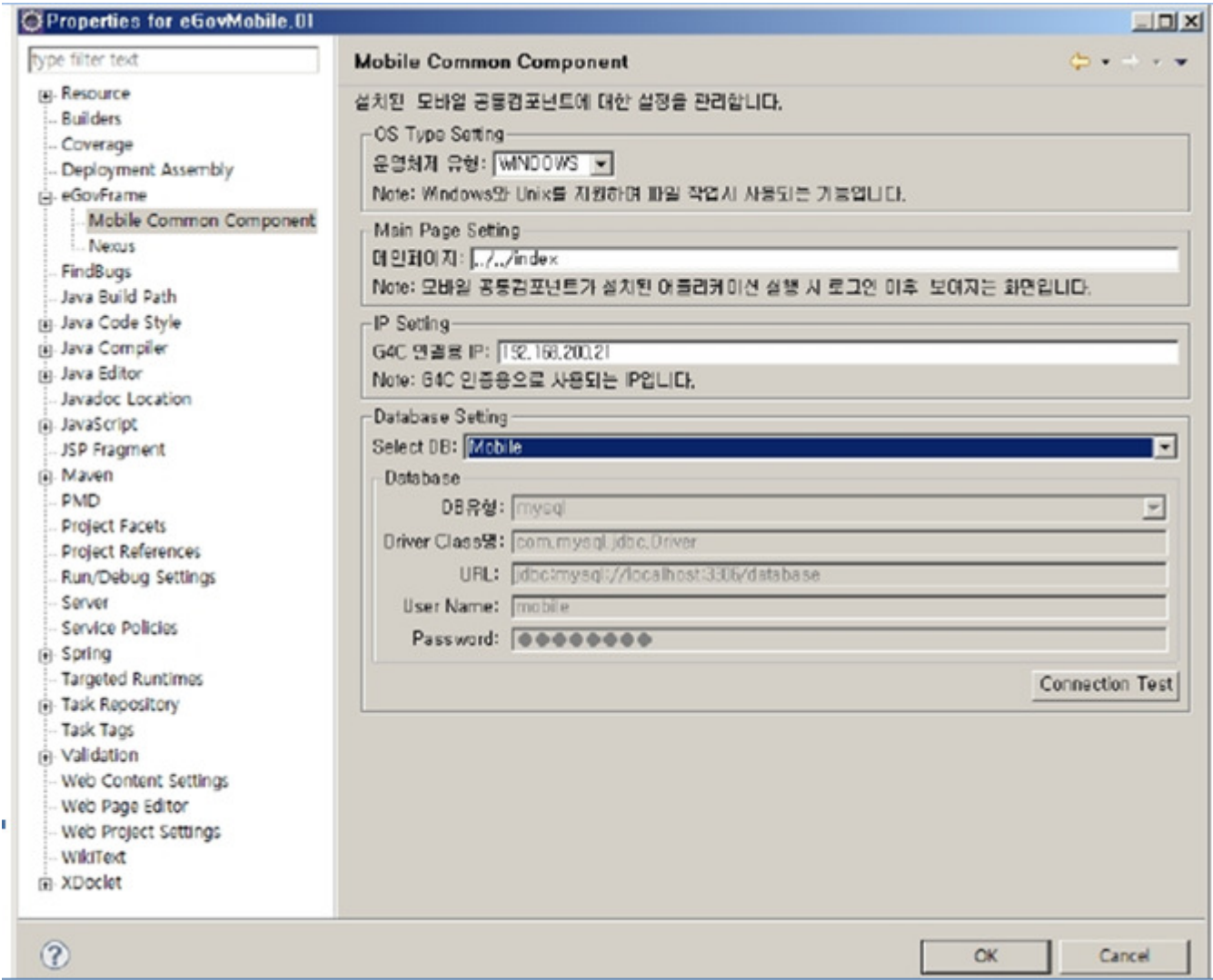


- ✓ Note: Other than 4 types of supported DB (MySQL, Oracle, Tibero and Altibase), user must create a table in the DB in the Datasource Explorer after default installation.
- ✓ Note: Existing mobile component will be overwritten when modified.
- ✓ Note: Server Path should be set default ("/") to retrieve sub items after mobile common component installation.
- ✓ Note: If Maven installation failed after mobile common component installation, 3rd party libraries should be installed separately.

Configure Mobile Common Component

Mobile Common Component Configuration Tool

1. Right click on eGovFrame-based Mobile Project with mobile common component installed, then select Properties > eGovFrame > Mobile Common Component.



Mobile Common Component Page

Options	Description	Default
OS Type	Select a User's OS	Refer to globals.properties in new project created with the mobile common component installation.
Main page	Displays an intro page for selected mobile common component	Refer to globals.properties in new project created with the mobile common component installation.
G4C Connect	Displays IP for G4C verification	Refer to globals.properties in new project created with the mobile common component installation.
Select DB	Selected DB info for mobile common component installation from registered user DBs in Datasource Explorer.	Empty or Refer to globals.properties in new project created with the mobile common component installation.

- ✓ Note: If Select DB is empty, check Datasource Explorer. (Refer to the [Data Source Explorer](#))
- ✓ Note: Other than supported 4 types of DB (MySQL, Oracle, Tibero and Altibase), Mobile Common Component Configuration Tool doesn't manage registered DBs in the Datasource Explorer.

References

Link Page URL for New Mobile Common Components

Component Name	Link Page URL
Realtime notice service	/mbl/com/rns/goRealtimeNoticeMsg.mdo, /mbl/com/rns/goRealtimeNoticeList.mdo
Mobile device identification	/mbl/com/mdi/selectMobileDeviceIdent.mdo, /mbl/com/mdi/selectDeviceIdentList.mdo
Sync service	/mbl/com/syn/goMobileSyncList.mdo, /mbl/com/syn/selectSyncList.mdo
Offline web service	/mbl/com/ows/goMobileOfflineWebList.mdo, /mbl/com/ows/selectOfflineWebList.mdo
Location Service	/mbl/com/geo/selectMobileBuildingLocationInfoPublicList.mdo, /mbl/com/geo/selectMobileBuildingLocationInfoPrivateList.mdo
Mobile Photo Album	/mbl/com/mpa/selectMobilePhotoList.mdo, /mbl/com/mpa/selectPhotoList.mdo
Mobile Chart/Graph	/mbl/com/mcg/selectMobileChartGraphList.mdo, /mbl/com/mcg/selectChartGraphList.mdo
Multimedia control	/mbl/com/mlt/selectMobileMultimediaList.mdo, /mbl/com/mlt/selectMultimediaList.mdo
OPEN-API Connect Service	/mbl/com/mlt/selectMobileMultimediaList.mdo, /mbl/com/mlt/selectMultimediaList.mdo
MMS services	/mbl/com/mms/goMmsWrite.mdo, /mbl/com/mms/selectMmsTransResultList.mdo