

Mobile IDE

Summary

The Mobile IDE provides Eclipse-based Perspectives, a menu, the mobile source code wizard, the mobile website template wizard, and others.

Description

On top of the eGovFrame Mobile IDE, all the convenient menu items and the new project creation wizard has been added, and the details are as follows:

Perspective

Based on the eGovFrame Mobile IDE, mobile menus are added for mobile application development.

Menu

Menu items enabled within the eGovFrame Perspective provide quick access to Eclipse plug-ins essential to the eGovFrame features.

Mobile source code wizard

This wizard creates a project with the mobile source backbone code and compilation settings for developing eGovFrame mobile applications.

- Mobile Project
 - **Blank projects** provide basic CSS and JavaScript for developing mobile web application.
 - **Sample projects** provide web application settings, a controller, JSP, CSS and JavaScript to build UI of the mobile web application.

Mobile website template wizard

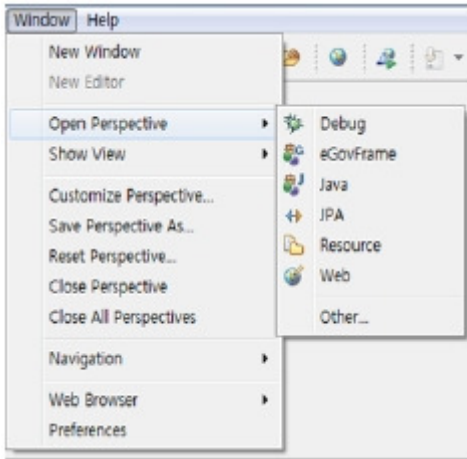
The eGovFrame provides a basic project creation wizard that lets you create mobile template projects.

- Collaboration: This tool provides a basic project organization to port the mobile common components, and to install and run collaboration templates.
 - Including features for managing a board, comments, scraps and an address book.
- User support: This tool provides a basic project organization to port the mobile common components, and to install and run user support templates.
 - Including management features for news, FAQ, Q&A, counseling, sitemap, mypage, glossary, the administration glossary, recommended sites, online manual, mobile help, mobile events, mobile terms and conditions, and mobile journal.

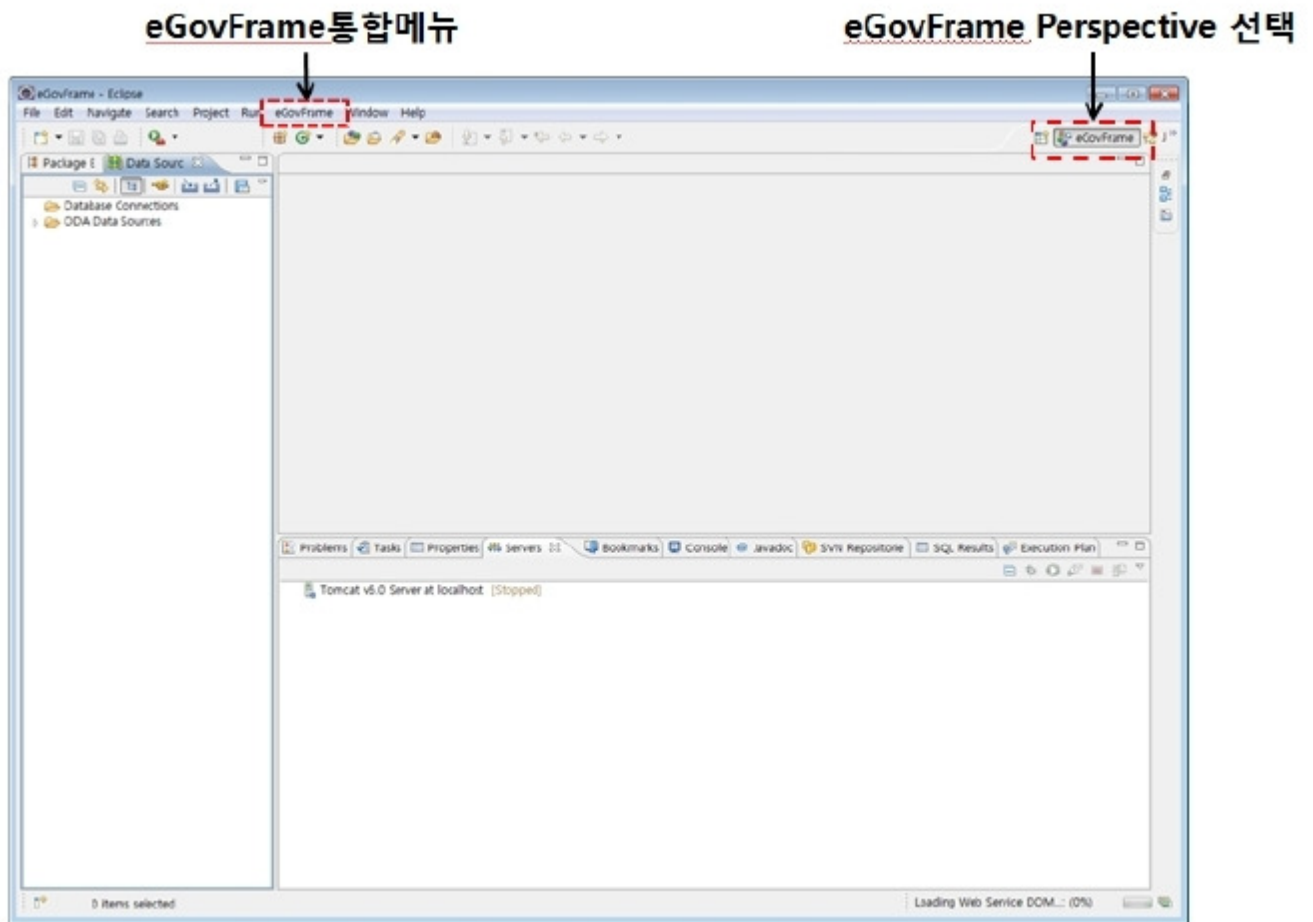
Manual

1. eGovFrame Perspective

1. Click the Open Perspective button on the top right corner of the Workbench. This provides the same functionality as choosing Windows > Open Perspective menu.
2. To see the entire list of Perspectives, choose Other... from the drop-down menu.
3. Choose eGovFrame Perspective.



4. The title bar will display the eGovFrame.



2. eGovFrame Menu

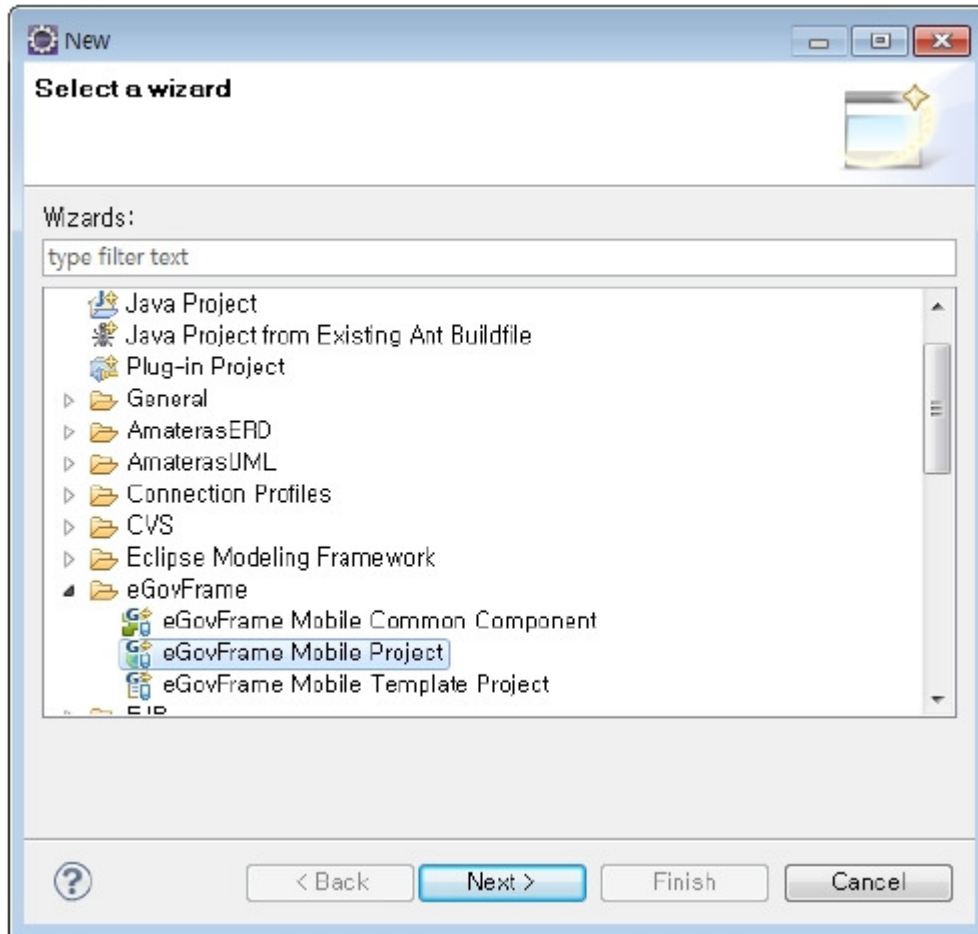
Changing the Perspective to eGovFrame will change the title bar to eGovFrame.

Category	Menu	Submenu	Description
Start	New Mobile Project		Run a new eGovFrame mobile project wizard
	New Mobile Template Project		Run a new eGovFrame mobile template project
Implementation	Add Mobile Common Component		Run a mobile common components creation wizard
	Mobile Web Verification (Mobile OK)	by Page URL	Mobile web verification via page URL
		by Site URL	Mobile web verification via Site URL
		by File Upload	Mobile web verification via File Upload
		by FTP	Mobile web verification via FTP
Mobile Web Verification (W3C)	by Page URL	W3C mobile web verification via Page URL	
	by File Upload	W3C mobile web verification via File Upload	
	by Direct Input	W3C mobile web verification via Direct Input	
Configuration	Add Plug-In		Run page to add plug-ins

3. New eGovFrame mobile project wizard

3.1. New eGovFrame mobile project wizard

1. Choose File > New > eGovFrame Mobile Project from the menu. (Must be in eGovFrame Perspective)
Or, press Ctrl+N to run the new wizard, choose eGovFrame > eGovFrame Mobile Project and then click the Next button.



2. Enter a project name and fill in Maven settings, then click the Next button.

New eGovFrame Mobile Project

eGovFrame Mobile Project
eGovFrame Mobile Project를 생성합니다.

Project name:

Contents

Use default Workspace location

Location:

Target Runtime

Dynamic Web Module version

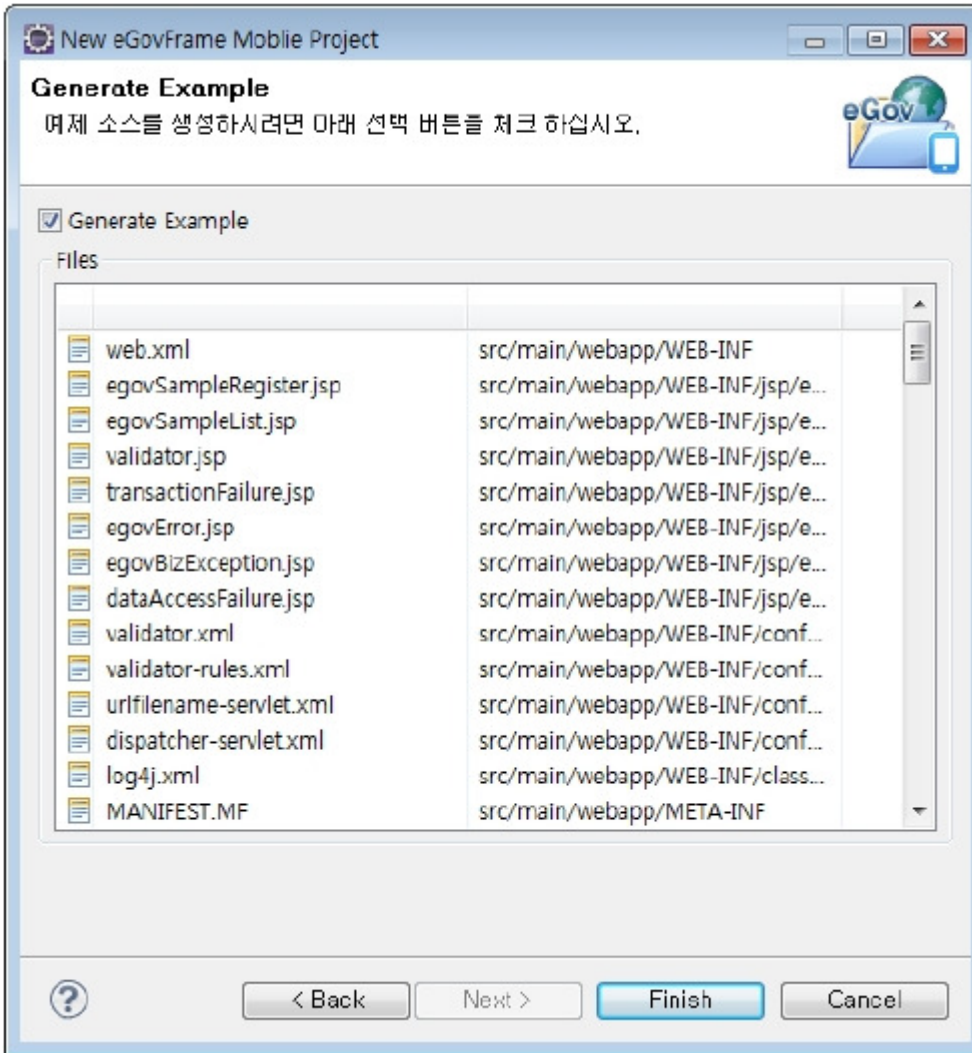
Maven Setting

Group Id:

Artifact Id:

Version:

3. Confirm if the Generate Example was generated, and click the Finish button.



Page of "Create a eGovFrame Mobile Project"

Option	Description	Default Value
Project Name	Enter a new project name.	Blank
Contents	If "Use default Workspace location" is checked, project directory gets created automatically in the default workspace. Arbitrary directory is selectable if you uncheck the option and locate the directory by clicking Browse button.	Use a default Workspace location
Target Runtime	Select web application's target server	<None>
Dynamic Web Module Version	Choose the dynamic web module version	2.5
Group Id	Enter a Maven group ID	Blank
Artifact Id	Enter a Maven artifact ID	Blank
Version	Enter the Maven version	2.0.0

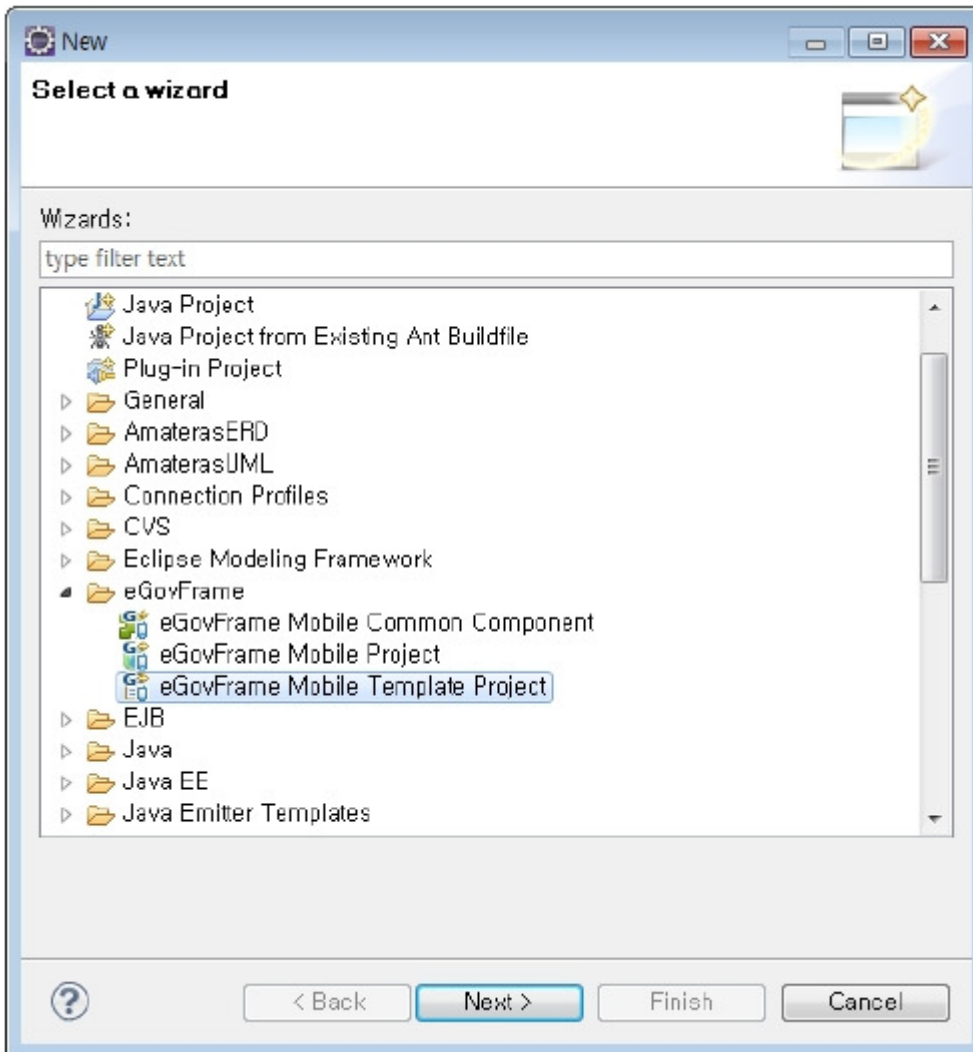
Page of "Generate Example"

Option	Description
Generate Example	Determines whether to include example source code when creating a project

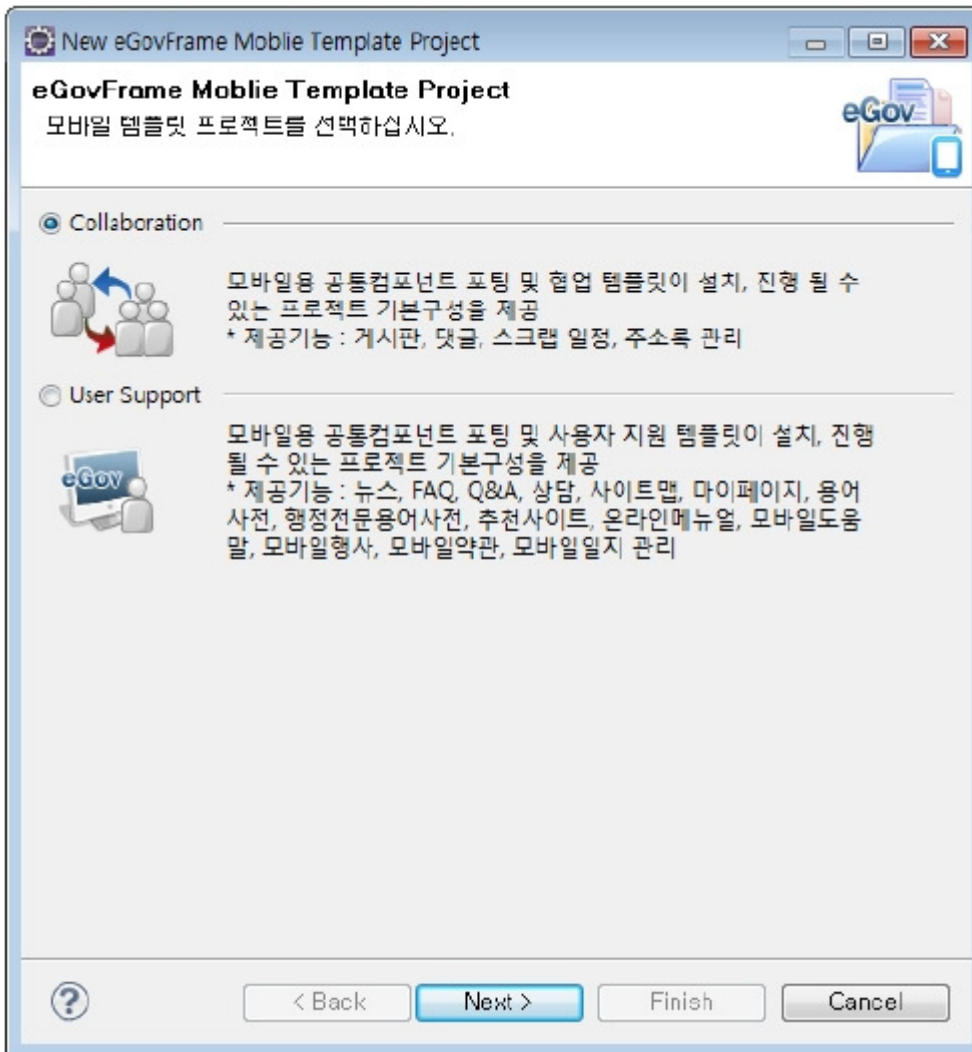
※ After creating your project, modify file repository information in the pom.xml to your settings.

3.2. New Mobile Template Project Wizard

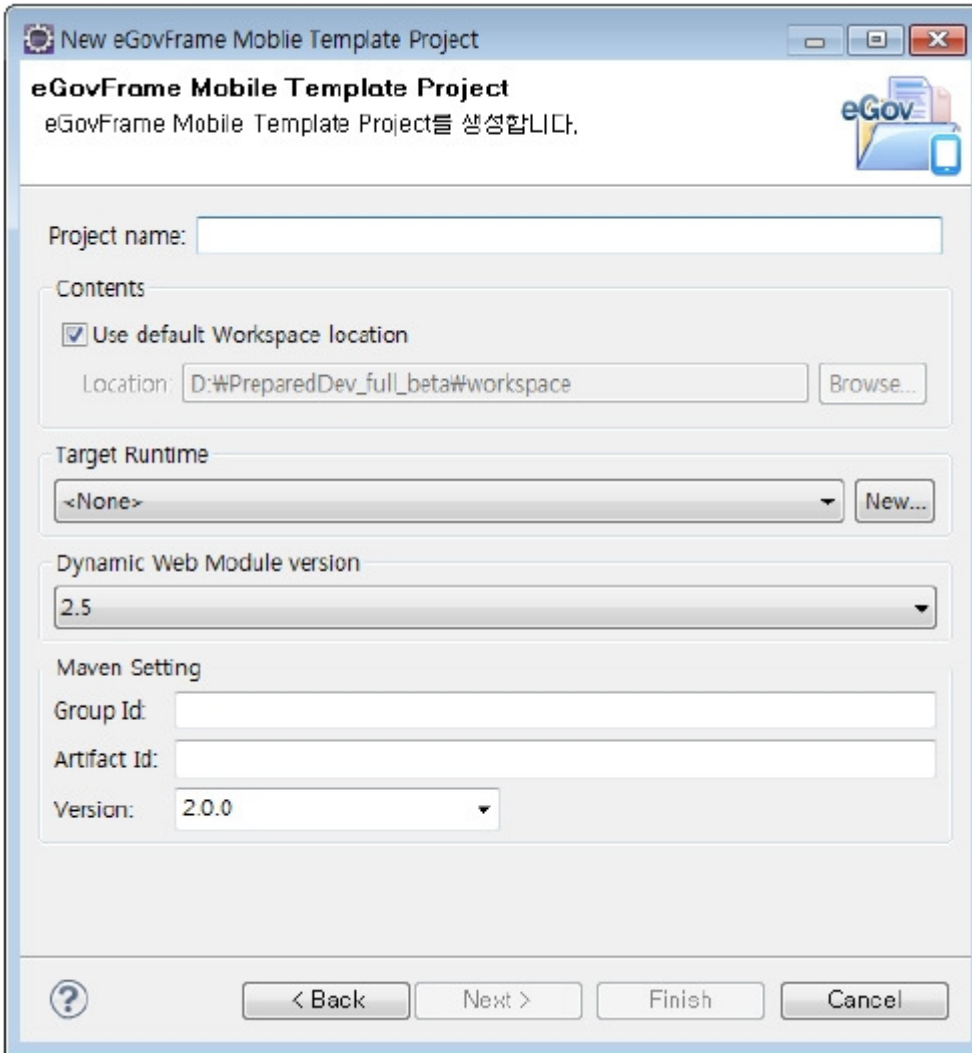
1. Choose File > New > eGovFrame Mobile Template Project from the menu. (Only if in eGovFrame Perspective)
Or, click Ctrl+N to run the wizard, choose eGovFrame > eGovFrame Mobile Template Project, and then click the Next button.



2. Choose the template you want to use and click the Next button.



3. Enter a project name and fill in Maven settings, and click the Finish button.



Page of "Create a eGovFrame Template Project"

Option	Description	Default Value
Project Name	Enter new project name	Blank
Contents	If Use default Workspace location is checked, project directory gets created automatically in the default workspace. Use default Workspace location If you want to use a custom workspace location, uncheck the option, and click Browse.	Use default Workspace location
Target Runtime	Selects web application's target server	<None>
Dynamic Web Module Version	Chooses dynamic web module version	2.5
Group Id	Enters Maven group ID	Blank
Artifact Id	Enters Maven artifact ID	Blank
Version	Enters Maven version	2.0.0

- ✓ After creating your project, modify the file repository information in the pom.xml to your settings.
- ✓ If any import error for javax.servlet.jsp.* in the EgovComCrossSiteHndlr.java occurs, refer to the jsp-api.jar import guideline.
- ✓ If the broken CSS or the sub-component menu link error occurs, refer to the project path settings guideline.
- ✓ If you want to optimize for mobile browser settings, refer to external browser settings guideline.
- ✓ The eGovFrame provides standard mobile JSP templates. To use the templates, refer to the standard mobile JSP template settings guideline.