

SVN Repositories View

Summary

The eGovFrame uses Subversion (SVN), an open-source SCM tool, to facilitate developers' source code management on the work station.

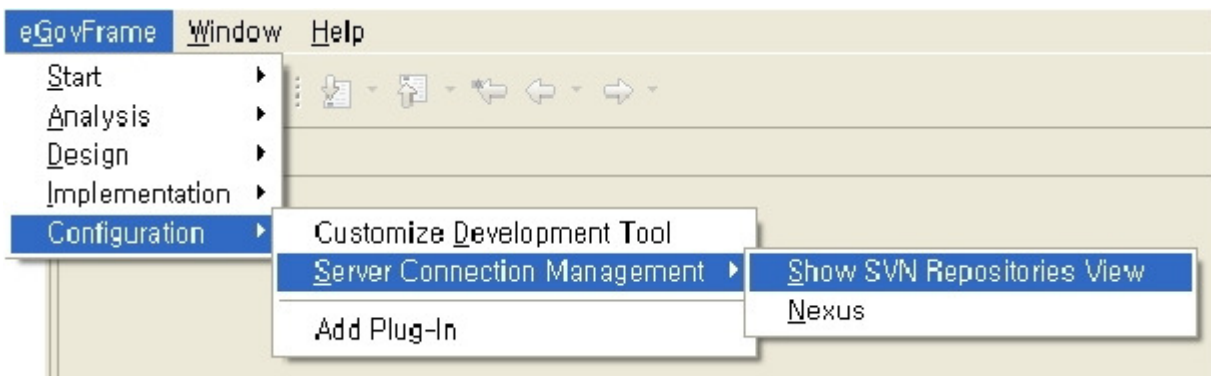
Description

The eGovFrame provides SVN as its SCM tool that aids in team project management in the development environments.

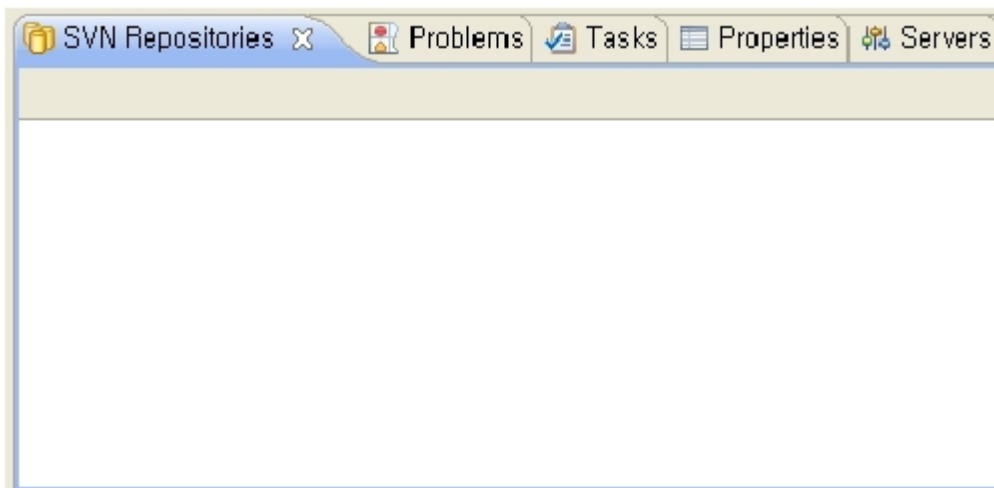
Manual


In order to access SVN repositories from Eclipse, the SVN Connector needs to be updated.

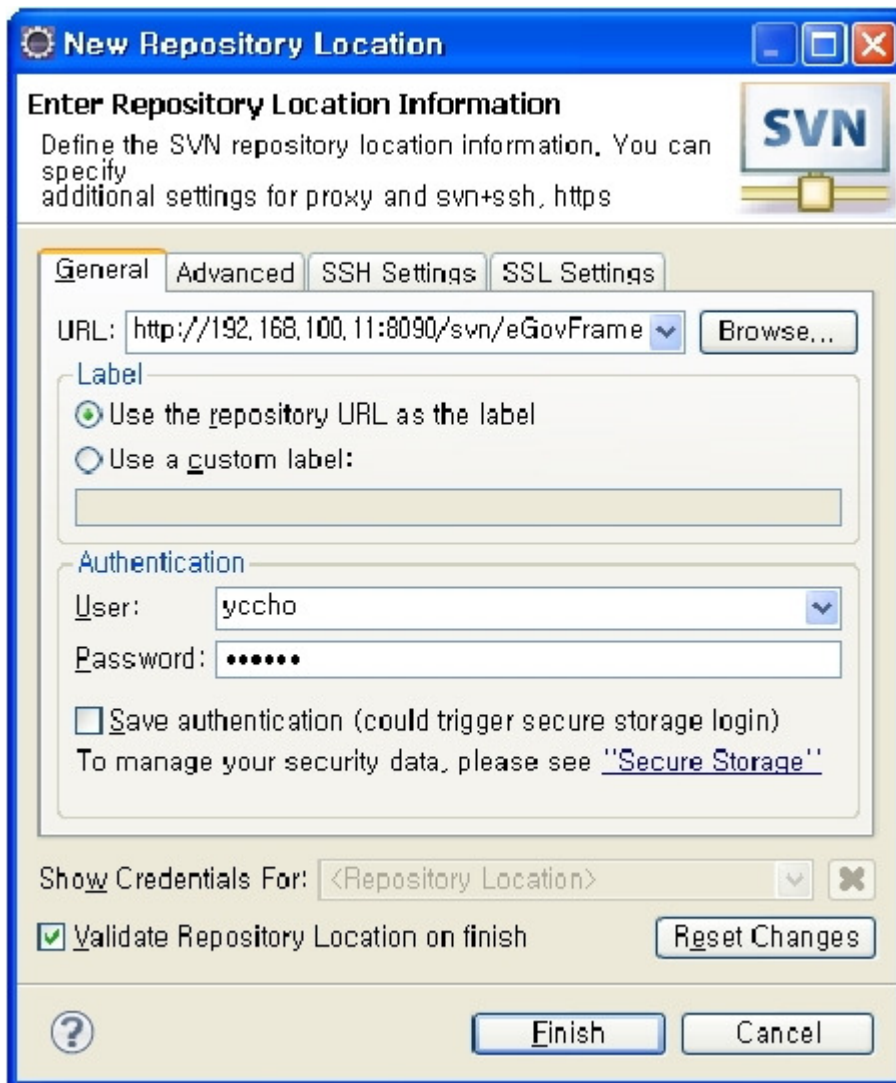
1. Switch to the eGovFrame Perspective in the Eclipse IDE.
2. Choose eGovFrame > Configuration > ServerConnection Management > Show SVN Repositories View from the menu.



3. Confirm that the SVN repositories view opens up on the bottom.



4. Click the New Repository Location  to enter a repository path.



References

Software	Version
Subversive SVN Connector	2.2.2