

## Web Standard Verification

### Summary

eGovFrame provides a method that can use the web standard diagnosis provided by National Information Society Agency (NIA).

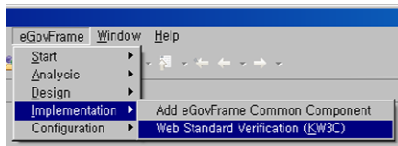
### Description

The web standard diagnosis program diagnoses the compliance with the web standards (HTML, CSS) and classifies the grammatical errors by type and helps web developers and content producers manage and revise the web sites. For detailed functions, usage, installation and issues of the web standard diagnosis program, refer to NIA's web site (<http://www.nia.or.kr>) or the web standard diagnosis program provided by NIA.

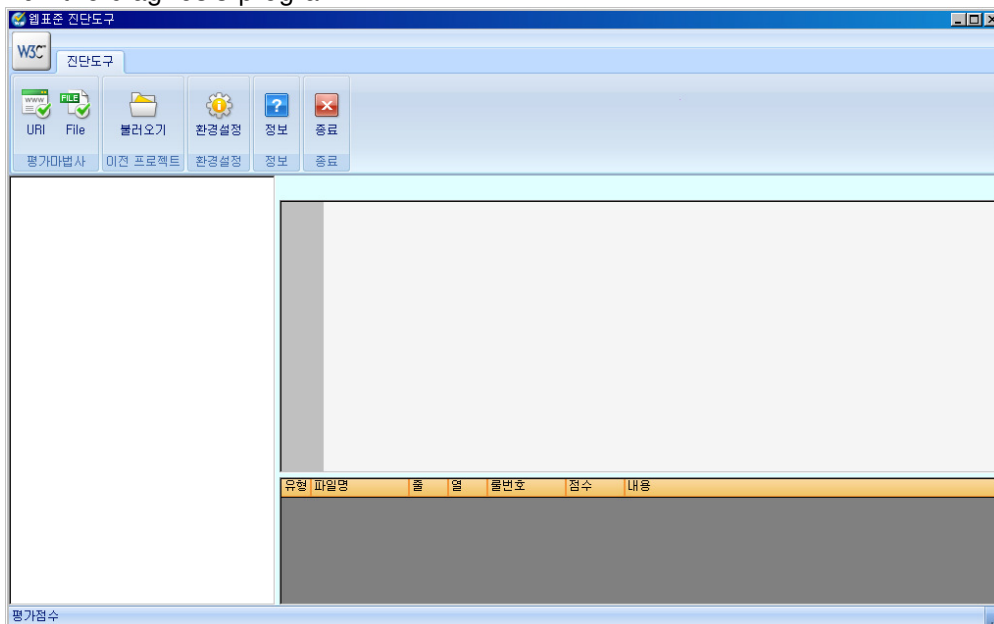
### How to Diagnose

#### Using eGovFrame Menu

1. In eGovFrame menu, click eGovFrame > Implementation > Web Standard Verification(KW3C).



2. Run the diagnosis program.



### How to download and install the installation program from NIA web site

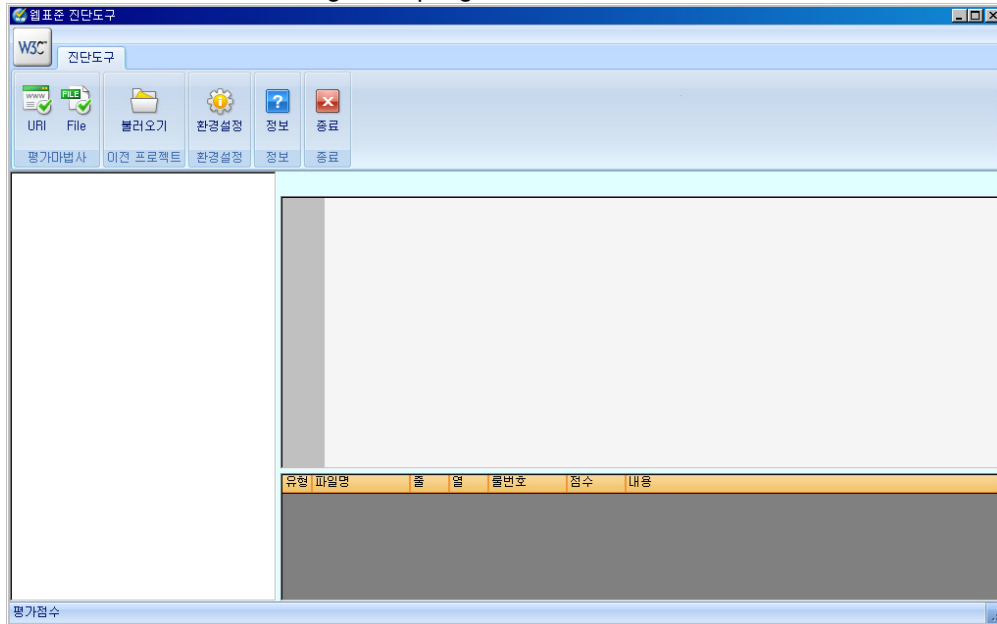
1. Visit NIA web site (<http://www.nia.or.kr>).



2. Download and install the web standard diagnosis program from NIA web site.



3. Run the web standard diagnosis program.



## References

## Recommended Environment

| <b>Classification</b> | <b>Specifications</b>   |
|-----------------------|---|
| OS                    | <ul style="list-style-type: none"> <li>- Windows XP Service Pack 3</li> <li>- Windows Server 2003 Service Pack 2</li> <li>- Windows Server 2008 Service Pack 2</li> <li>- Windows Vista Service Pack 2</li> <li>- Windows7</li> </ul> |
| CPU                   | Pentium 4 2GHz or higher  |
| RAM                   | 512 MB or more  |
| HDD                   | 200MB or more (need as much as site capacity, if there are many evaluations)  |
| Java                  | Java is required to carry out the inspection function   |

✓ If there is a problem with execution or other when running the web standard diagnosis program, refer to the guide provided by NIA (<http://www.nia.or.kr>).