

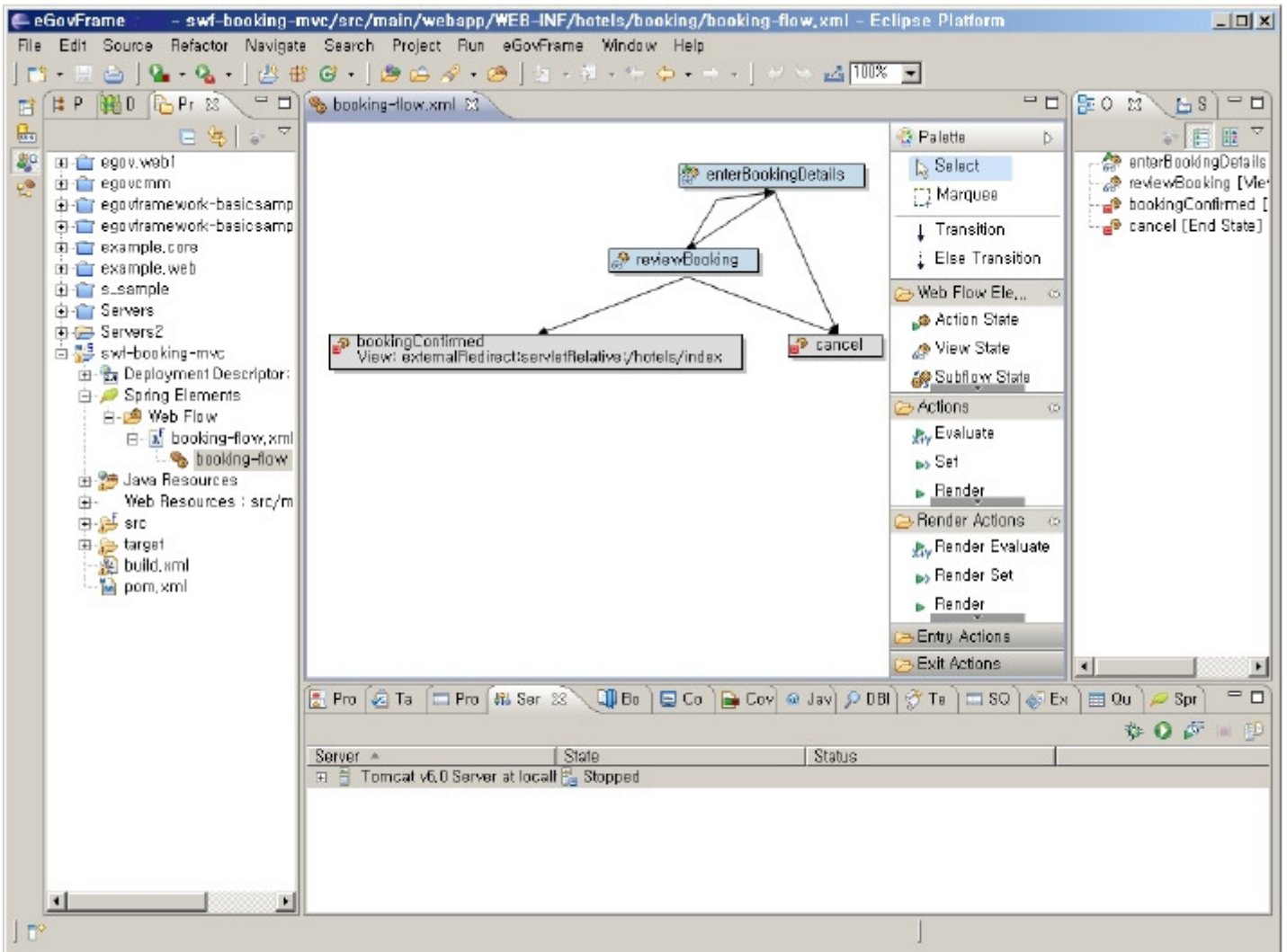
Summary

Spring Web Flow provides useful features to validate configuration files and editing.

Spring Web Flow aims to provide the best solution in managing web application page flow. It works as a powerful controller for applications that need navigation feature to guide users through large application transactions separated in several stages stages.

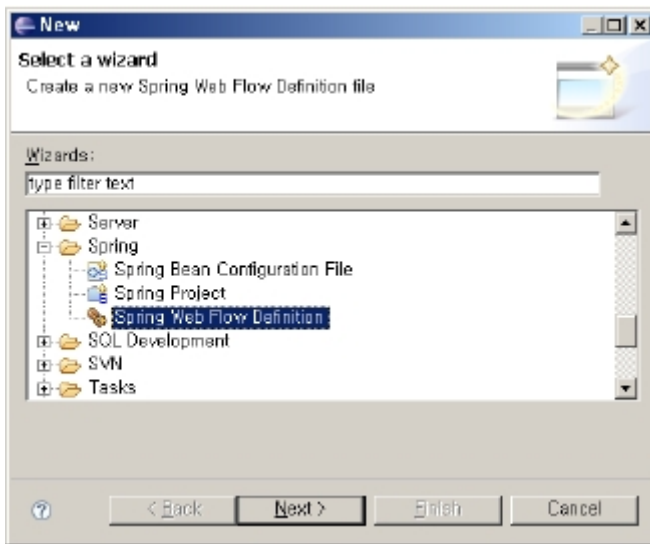
Description

- Full support to Spring WebFlow Preview Release 3
- A graphic editor with all features against WebFlow Xml configuration files
 - Drag'n'Drop Editing.
 - Grammar validation while editing.
 - Print and export feature (jpg, BMP)
 - Auto layout on Spring WebFlow config file with Connection Routing.
 - S-by-side editing feature on for the same config files of XML Editor plug-ins and the WebFlow Editor.



Manual

1. Select **File > New > Spring Web Flow Definition** from menu bar. (Make sure eGovFrame is set in Perspective)
Otherwise, use **Ctrl+N** key combo to launch New Wizard dialog, select **Spring > Spring Web Flow Definition**, then click **Next**.



2. Select a folder to save file, enter file name, then click Finish.
3. Right click on newly created WebFlow setting file in Project Explorer, select Open Graphical Editor.
4. Compose WebFlow, then save.

References

- Spring WebFlow Editor [<http://springide.org/project/wiki/WebFlowEditor>]
- Introduction to Spring WebFlow (Translated to Korean) [<http://openframework.or.kr/Wiki.jsp?page=SpringWebFlowIntroduction>]