

# User support – Online Poll

---

## Summary

---

Online Poll service allows the user to participate in short surveys provided frequently in the site. If the user votes, the service provides a function that shows the results and statistics.

Online Poll service is a mobile common component developed based on HTML5, jQuery and jQM(jQueryMobile).

For details, refer to Mobile Execution Environment GuideGuide [<http://www.egovframe.go.kr/html/egovframework/mb/mguide/mguide.html>].

The component-related CSSs include EgovMobile.css (provided as standard), egovBoard.css and ussCommon.css..

In addition, jAlert , which is supported in common, is used and it is defined in the following js file.

- EgovMobile.js

## Subjects of Support

This component has been developed and tested on the browsers available in the mobile devices.

Since the browser support is different depending the device (PC or mobile device), development and application should be carefully carried out.

The test devices include Galaxy S2, Galaxy S, Galaxy Tab, IPad2 and iPhone 4.

The test mobile browsers include Android basic browser, Firefox, Safari and Opera Mobile.

### Android

The test devices include Galaxy S2, Galaxy S and Galaxy Tab.

The test mobile browsers include Android basic browser, Firefox(6.xx) and Opera Mobile browser.

- Android OS 2.3 (GingerBread): The execution of HTML5, CSS3 and components is supported stably.
- Android OS 2.1 (Eclair), 2.2 (Froyo): The support for HTML5, CSS3 is not sufficient to implement the component UI properly.

However, Opera Mobile was excluded from the support as it caused some problems with handling colors and events.

### iOS

iPhone4 and iPad2 were used for testing.

iOS 4.2, 4.3 both version supported HTML5 and CSS3 relatively well.

## Flow chart

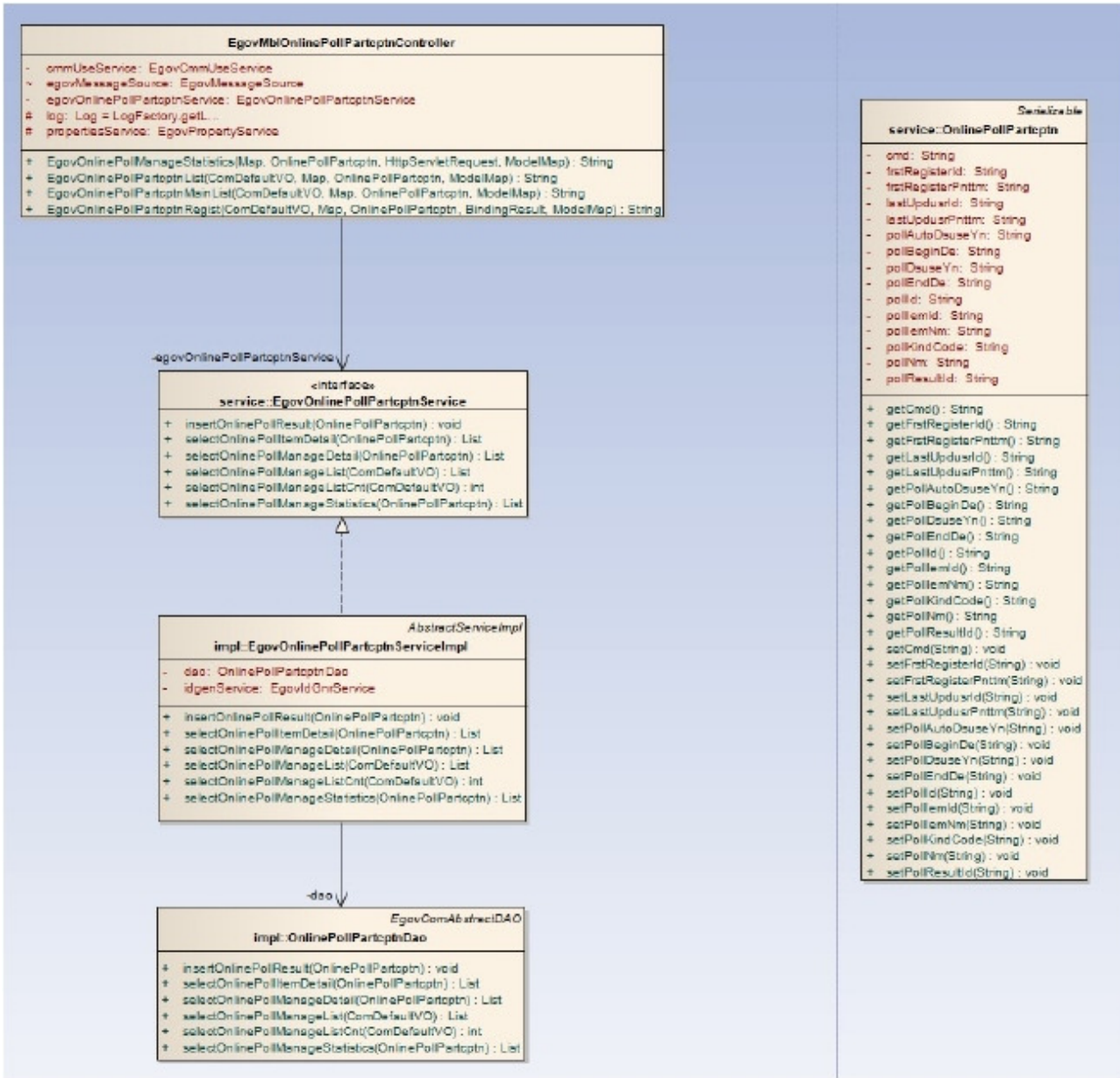


## Description

---

Online Poll is largely composed of Online Poll participation list inquiry , Online Poll participation registration and Online Poll participation statistics.

Class diagram



## Relate sources

Types	Source names	Notes
Controller	egovframework.com.uss.olp.opp.web.EgovOnlinePollPartcptnC ontroller.java	Online Poll Participation Controller Class
Controller	egovframework.com.uss.olp.opp.web.EgovMblOnlinePollPartcptnC ontroller.java	Online Poll Participation Mobile Controller Class
Service	egovframework.com.uss.olp.opp.service.EgovOnlinePollPartcptnService.java	Online Poll Participation Service C lass
VO	egovframework.com.uss.olp.opp.service.OnlinePollPartcptn.java	Online Poll Participation VO C lass
VO	egovframework.com.uss.olp.opp.service.OnlinePollItem.java	Online Poll Item VO C lass
VO	egovframework.com.cmm.C omDefaultVO.java	Search VO C lass
ServiceImpl	egovframework.com.uss.olp.opp.service.impl.EgovOnlinePollPartcptnServiceImpl.java	Online Poll ParticipationServiceImpl Class
DAO	egovframework.com.uss.olp.opp.service.impl.OnlinePollPartcptnDao.java	Online Poll Participation Dao C lass
JSP	/WEB-INF/jsp/egovframework/uss/olp/opp/EgovOnlinePollPartcptnList.jsp	Online Poll Participation List Inquiry Page
JSP	/WEB-INF/jsp/egovframework/uss/olp/opp/EgovOnlinePollPartcptnRegist.jsp	Online Poll Participation Registration Page
JSP	/WEB-INF/jsp/egovframework/uss/olp/opp/EgovOnlinePollPartcptnStatistics.jsp	Online Poll Participation Statistics Page
JSP	/WEB-INF/jsp/egovframework/mbi/com/uss/olp/opp/EgovOnlinePollPartcptnList.jsp	Online Poll Mobile List Inquiry Page
JSP	/WEB-INF/jsp/egovframework/mbi/com/uss/olp/opp/EgovOnlinePollPartcptnRegist.jsp	Online Poll Mobile Registration Page
JSP	/WEB-INF/jsp/egovframework/mbi/com/uss/olp/opp/EgovOnlinePollPartcptnStatistics.jsp	Online Poll Mobile Statistics Page
QUERY XML	/egovframework/sqlmap/com/uss/olp/opp/EgovOnlinePollPartcptn.xml	Online Poll Participation QUERY XML
Validator Rule XML	resources/egovframework/validator/validator-rules.xml	XML that defines Validator Rule
Validator XML	resources/egovframework/validator/com/uss/olp/opp/EgovOnlinePollPartcptn.xml	Online Poll Participation Validator XML
Message properties	resources/egovframework/message/message-common_ko_KR.properties	Online Poll Participation Message properties
Idgen XML	resources/egovframework/spring/context-idgen.xml	Online Poll Participation Id GenerationIdgen

## ID Generation

- To use ID Generation Service, add SCHEDUL\_ID entry to COMTECOPSEQ, the Sequence storing table.

```

CREATE TABLE COMTECOPSEQ ( table_namevarchar(16) NOT NULL,
next_id DECIMAL(30) NOT NULL,
PRIMARY KEY (table_name));
INSERT INTO COMTECOPSEQ VALUES('POLL_MGR_ID','0');

```

```

CREATE TABLE COMTECOPSEQ ( table_namevarchar(16) NOT NULL,
next_id DECIMAL(30) NOT NULL,
PRIMARY KEY (table_name));
INSERT INTO COMTECOPSEQ VALUES('POLL_IEM_ID','0');

CREATE TABLE COMTECOPSEQ ( table_namevarchar(16) NOT NULL,
next_id DECIMAL(30) NOT NULL,
PRIMARY KEY (table_name));
INSERT INTO COMTECOPSEQ VALUES('POLL_RUT_ID','0');

```

#### Related tables

Table name	Table name(English )	Notes
Online Poll Management	C OMTNOnlinePollPartcptn	Manage Online Poll.
Online Poll Items	C OMTNONLINEPOLLITEM	Manage Online Poll items.
Online Poll Results	C OMTNONLINEPOLLRESULT	Manage Online Poll Results.

#### Related codes

Code classification	Code classification	Code ID	Code name
C OM039	Online Poll	001	Society
C OM039	Online Poll	002	Politics
C OM039	Online Poll	003	Economy
C OM039	Online Poll	004	Culture
C OM039	Online Poll	005	Humane
C OM039	Online Poll	006	Engineering
C OM039	Online Poll	007	Others

#### Related functions

### Online Poll Participation list inquiry

#### Business rules

Online Poll participants can retrieve the registered questionnaire survey participation information in a list format.

Click a list to move to Online Poll Participation registration screen. Click the inquiry image on the right to move to Online Poll Participation statistics screen. Use the POLL names as search conditions.

#### Related codes

N/A

#### Screen and execution manual

Action	URL	Controller method	QueryID
Inquiry	/uss/olp/opp/listEgovOnlinePollPartcptnMain.mdo	EgovOnlinePollPartcptnMainList	"OnlinePollPartcptn.selectOnlinePollManageList"
Registration	/uss/olp/opp/registOnlinePollPartcptn.mdo	EgovOnlinePollPartcptnRegist	"OnlinePollPartcptn.selectOnlinePollManageDetail"
			"OnlinePollPartcptn.selectOnlinePollItem"
Statistics	/uss/olp/opp/statisticsOnlinePollPartcptn.mdo	EgovOnlinePollManageStatistics	"OnlinePollPartcptn.selectOnlinePollManageDetail"
			"OnlinePollPartcptn.selectOnlinePollItem"
			"OnlinePollPartcptn.selectOnlinePollPartcptnStatistics"



Home: moves to Home screen.

Search: in order to retrieve Online Poll Participation lists, select search conditions at the top, enter a key word and click Search button.

Click list: moves to Online Poll participation screen.

Inquiry image: Online Poll participation statistics screen.

## Online Poll Participation registration

### Business rules

Register the selections of the participants for each question of Online Poll and if registered successfully, you will be moved to Online Poll Participation list inquiry screen.

When stored, SCHEDUL\_ID column uses "egovframework.rte.fdl.idgnr.impl.EgovTableIdGnrService" to receive Primary Key ⇒ POLLRUT\_(20 digits): SCHEDUL\_(7 digits) + serial number (13 digits) automatically.

```

<!-- IdGnrService... START-->
<bean name="egovOnlinePollResultIdGnrService"
      class="egovframework.rte.fdl.idgnr.impl.EgovTableIdGnrService"
      destroy-method="destroy">
  <property name="dataSource" ref="dataSource" />
  <property name="strategy" ref="onlinePollResultMsgstrategy" />
  <property name="blockSize" value="1" />
  <property name="table" value="COMTECOPSEQ"/>
  <property name="tableName" value="POLL_RUT_ID"/>
</bean>
<bean name="onlinePollResultMsgstrategy"
      class="egovframework.rte.fdl.idgnr.impl.strategy.EgovIdGnrStrategyImpl">
  <property name="prefix" value="POLLRUT_" />
  <property name="ciphers" value="12" />
  <property name="fillChar" value="0" />
</bean>
<!-- IdGnrService... END-->

```

### Related codes

N/A

### Screen and execution manual

Action	URL	Controller method	QueryID
Register	/uss/olp/opp/registOnlinePollPartcptn.mdo	EgovOnlinePollPartcptnRegist	"OnlinePollPartcptn.insertOnlinePollResult"
List	/uss/olp/opp/listEgovOnlinePollPartcptnMain.mdo	EgovOnlinePollPartcptnMainList	"OnlinePollPartcptn.selectOnlinePollManageList"



Back: moves to Online Poll participation list inquiry screen.  
 Register: the entered Online Poll Participation information is stored.  
 List: moves to Online Poll participation list inquiry screen.

## Online Poll Participation statistics

### Business rules

Show information on each item of Online Poll in the graph form.

### Related codes

N/A

### Screen and execution manual

Action	URL	Controller method	QueryID
List	/uss/olp/opp/listEgovOnlinePollPartcptnMain.mdo	EgovOnlinePollPartcptnMainList	"OnlinePollPartcptn.selectOnlinePollManageList"



Back: moves to Online Poll participation list inquiry screen.  
List: moves to Online Poll participation list inquiry screen.

---

## Settings and Notes

- \* The currently distributed mobile common component adopts HTML5 and CSS3 and this means that it doesn't support the standards for mobile web site validity check of MobileOK and W3C. For details on correct validity check, please contact the competent professional institute.
- \* Security verification is under progress on the currently distributed mobile component. We plan to complete security verification as soon as possible to release a new security-patched version.

---

## References

- Refer to Online Poll Management (existing web version): [Online Poll Management](#)
- Refer to Online Poll Participation(existing web version): [Online Poll Participation](#)
- Refer to the execution environment: [ID Generation Service](#)  
Distribution and test: [Mobile Common Component System](#) and [distribution package plan](#)