

## Summary

Questionnaire Survey service provides a function for the participants to inquire questionnaire lists, a function to register the answers and a statistics function to check the results and statistics data.

Questionnaire Survey is a mobile common component developed based on HTML5, jQuery and jQM(jQueryMobile).

For details, refer to Mobile Execution Environment GuideGuide [http://www.egovframe.go.kr/html/egovframework/mbl/mguide/mguide.html].

The component-related CSSs include EgovMobile.css (provided as standard), egovBoard.css and ussCommon.css. In addition, jAlert and jPassword, which are supported in common, is used and it is defined in the following js file.

- EgovMobile.js
- EgovCom.js

## Subjects of Support

This component has been developed and tested on the browsers available in the mobile devices.

Since the browser support is different depending the device (PC or mobile device), development and application should be carefully carried out.

The test devices include Galaxy S2, Galaxy S, Galaxy Tab, iPad2 and iPhone 4.

The test mobile browsers include Android basic browser, Firefox, Safari and Opera Mobile.

### Android

The test devices include Galaxy S2, Galaxy S and Galaxy Tab.

The test mobile browsers include Android basic browser, Firefox(6.xx) and Opera Mobile browser.

Android OS 2.3 (GingerBread): The execution of HTML5, CSS3 and components is supported stably.

Android OS 2.1 (Eclair), 2.2 (Froyo): The support for HTML5, CSS3 is not sufficient to implement the component UI properly.

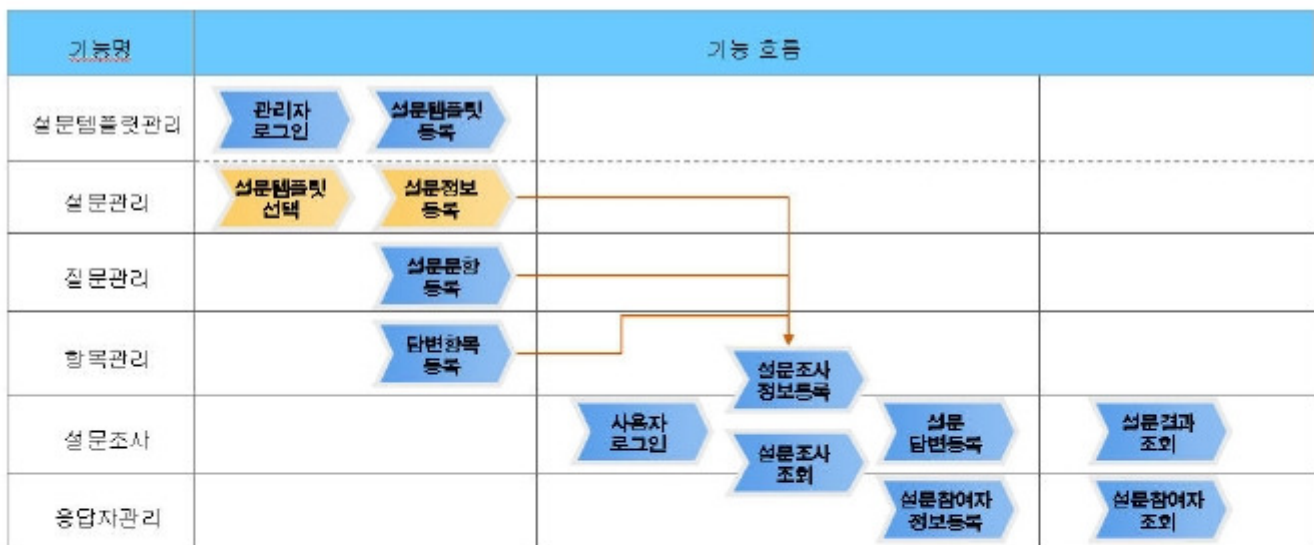
However, Opera Mobile was excluded from the support as it caused some problems with handling colors and events.

### iOS

iPhone4 and iPad2 were used for testing.

iOS 4.2, 4.3: both version supported HTML5 and CSS3 relatively well.

## Flow chart



### 1. Register the questionnaire template

Enter and register basic information for questionnaire template; deciding on the questionnaire type

### 2. Register the questionnaire

Select the questionnaire template, Enter and register basic information for questionnaire template.

### 3. Register questionnaire questions

Select questionnaire information, and enter and register questionnaire question basic information.

### 4. Register questionnaire items

Select questionnaire information and questionnaire item information, and enter and register questionnaire item basic information.

### 5. Participate in the questionnaire

In the questionnaire participation registration, reply to Questionnaire Survey.  
Use the questionnaire participation statistics to check the results.

### 6. Check the Questionnaire Survey (results)

Check the questionnaire survey results.

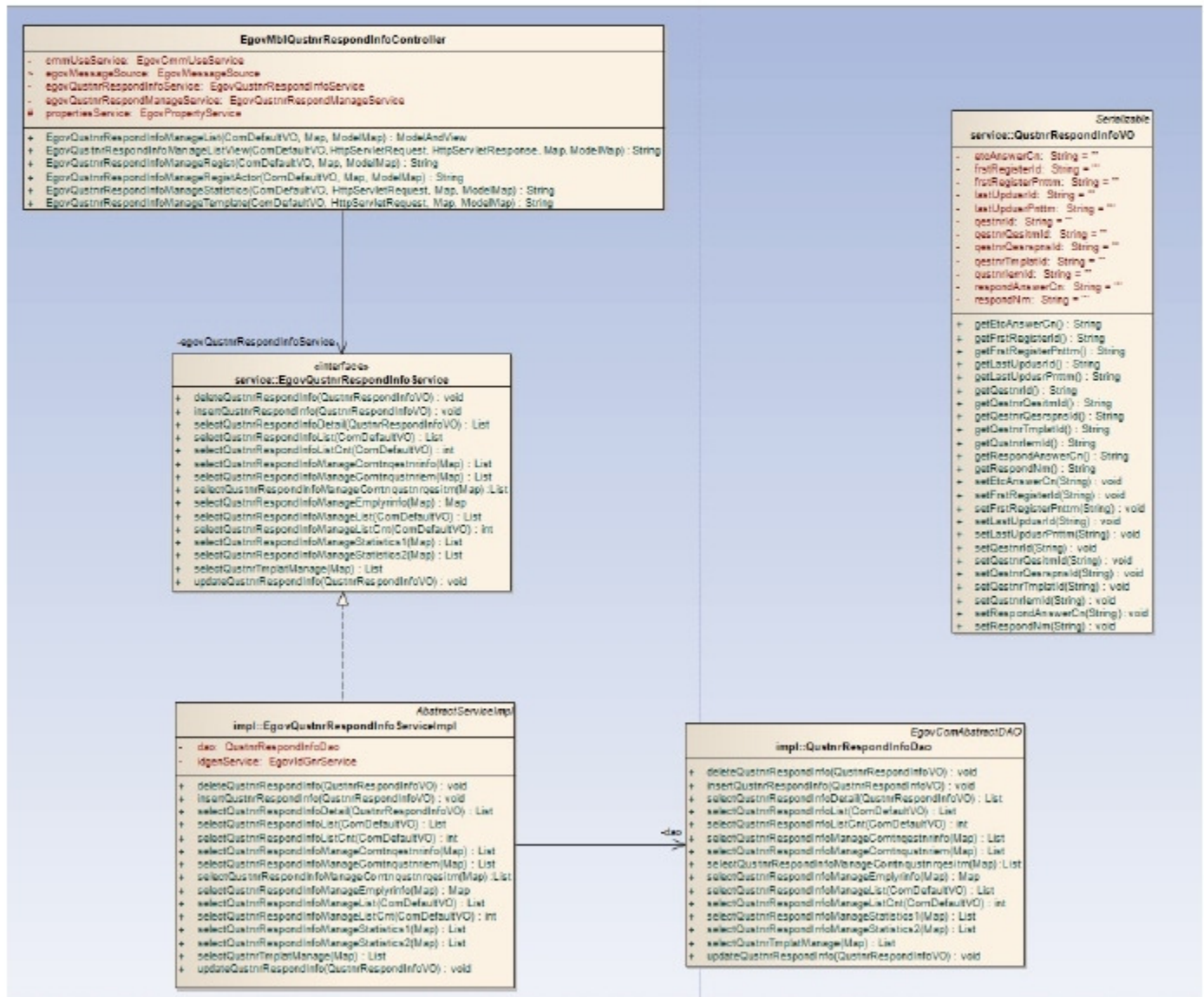
### 7. Check the Questionnaire replier management results

Check the Questionnaire replier management results.

## Description

Questionnaire Survey is largely composed of questionnaire participation list inquiry, questionnaire participation registration and questionnaire statistics.

### Class diagram



### Related sources

Types	Source name	Remark
C ontroller	egovframework.com.uss.olp.qri.web.EgovQstnrRespondInfoC ontroller.java	Questionnaire Participation C ontroller C lass
C ontroller	egovframework.mbl.com.uss.olp.qri.web.EgovMblQstnrRespondInfoC ontroller.java	Questionnaire Participation Mobile C ontroller C lass
Service	egovframework.com.uss.olp.qri.service.EgovQstnrRespondInfoService.java	Questionnaire Participation Service C lass
VO	egovframework.com.uss.olp.qri.service.QstnrRespondInfoVO.java	Questionnaire Participation VO C lass
VO	egovframework.com.cmm.C omDefaultVO.java	Search VO C lass

ServiceImpl	egovframework.com.uss.olp.qri.service.impl.EgovQustnrRespondInfoServiceImpl.java	Questionnaire ParticipationServiceImpl C class
DAO	egovframework.com.uss.olp.qri.service.impl.QustnrRespondInfoDao.java	Questionnaire Participation Dao C class
JSP	/WEB-INF/jsp/egovframework/com/uss/olp/qnn/EgovQustnrRespondInfoList.jsp	Questionnaire Participation List Inquiry Page
JSP	/WEB-INF/jsp/egovframework/com/uss/olp/qnn/EgovQustnrRespondInfoManageStatistics.jsp	Questionnaire Participation Registration Page
JSP	/WEB-INF/jsp/egovframework/com/uss/olp/qnn/EgovQustnrRespondInfoManageList.jsp	Questionnaire Participation Statistics Page
JSP	/WEB-INF/jsp/egovframework/mbl/com/uss/olp/qnn/EgovQustnrRespondInfoManageList.jsp	Questionnaire Participation List Inquiry Mobile Page
JSP	/WEB-INF/jsp/egovframework/mbl/com/uss/olp/qnn/EgovQustnrRespondInfoManageRegist.jsp	Questionnaire Participation Registration Mobile Page
JSP	/WEB-INF/jsp/egovframework/mbl/com/uss/olp/qnn/EgovQustnrRespondInfoManageStatistics.jsp	Questionnaire Participation Statistics Mobile Page
QUERY XML	/egovframework/sqlmap/com/uss/olp/qri/EgovQustnrRespondInfo.xml	Questionnaire Participation QUERY XML
Validator Rule XML	resources/egovframework/validator/validator-rules.xml	XML that defines Validator Rule
Validator XML	resources/egovframework/validator/com/uss/olp/qri/EgovQustnrRespondInfo.xml	Questionnaire Participation Validator XML
Message properties	resources/egovframework/message/message-common_ko_KR.properties	Questionnaire Participation Message properties
Idgen XML	resources/egovframework/spring/context-idgen.xml	Questionnaire Participation Id GenerationIdgen XML

#### Related tables

Table names	Table name	Notes
Questionnaire template	C OMTNQUSTNRTMPLAT	Retrieve Questionnaire template.
Questionnaire	C OMTNQESTNRINFO	Retrieve Questionnaire Management
Questionnaire question	C OMTNQUSTNRQESITM	Retrieve Questionnaire question
Questionnaire item	C OMTNQUSTNRIEM	Retrieve Questionnaire item
Questionnaire results	C	Retrieve Questionnaire results

#### Related codes

Code	Code classification name	Code ID	Code name
C OM014	Gender code	M	Man
C OM014	Gender code	F	Woman
C OM034	Work type code	1	Student
C OM034	Work type code	2	College
C OM034	Work type code	3	Soldier
C OM034	Work type code	4	Teacher
C OM034	Work type code	5	Others

#### Validator

Validator Rule is not applied. Script validation is used as the script.

## Manual

### Questionnaire Participation List Inquiry

#### Business rules

The questionnaire participants can retrieve the registered Questionnaire Participation information in a list format.

Click a list to move to Questionnaire Participation Registration screen. Click the inquiry image on the right to move to Questionnaire Statistics Screen.

Use the questionnaire titles as search conditions.

#### Related codes

N/A

#### Screen and execution manual

Action	URL	Controller method	QueryID
Inquiry	/uss/olp/qnn/EgovQustnrRespondInfoManageList.mdo	EgovQustnrRespondInfoManageList	"QustnrRespondInfoManage.selectQustnrRespondInfoManage"
Click list	/uss/olp/qnn/EgovQustnrRespondInfoManageRegist.mdo	EgovQustnrRespondInfoManageRegist	
	/uss/olp/qri/template/template.mdo	EgovQustnrRespondInfoManageTemplate	
Satistics	/uss/olp/qnn/EgovQustnrRespondInfoManageStatistics.mdo	EgovQustnrRespondInfoManageStatistics	

10 Questionnaire Survey participation lists are retrieved per page and paging is carried out on one page basis.



Home: moves to Home screen.

Search: in order to retrieve the Questionnaire Participation list, select the search conditions at the top, enter key word and click the Search button.

Click list: moves to Questionnaire Participation Registration screen.

Inquiry image: moves to Questionnaire Participation Statistics screen.

## Questionnaire Participation Registration

### Business rules

Register basic information of questionnaire participants and their answers to the questions. If registered successfully, you will be moved to Questionnaire Participation List Inquiry screen.

The Questionnaire Participation Registration, when the administrator registers a questionnaire list, uses the selected template file. (the file is found in /WEB-INF/jsp/egovframework/mbli/com/uss/olp/qri/.)

When stored, the QESRSPNS\_ID column uses "egovframework.rte.fdl.idgnr.impl.EgovTableIdGnrService" to receive Primary Key → QESRSPNS\_ID(20 digits): QRSPNS\_(7 digits) + Serial number (13 digits) automatically.

```

<!-- IdGnrService... START-->
<bean name="qustnrRespondInfoIdGnrService"
      class="egovframework.rte.fdl.idgnr.impl.EgovTableIdGnrService"
      destroy-method="destroy">
  <property name="dataSource" ref="dataSource" />
  <property name="strategy" ref="QustnrRespondInfoStrategy" />
  <property name="blockSize" value="10"/>
  <property name="table" value="COMTECOPSEQ"/>
  <property name="tableName" value="QESRSPNS_ID"/>
</bean>
<bean name="QustnrRespondInfoStrategy"
      class="egovframework.rte.fdl.idgnr.impl.strategy.EgovIdGnrStrategyImpl">
  <property name="prefix" value="QRSPNS_" />
  <property name="cipers" value="13" />
  <property name="fillChar" value="0" />
</bean>
<!-- IdGnrService... END-->

```

### Related codes

N/A

### Screen and execution manual

Action	URL	Controller method	QueryID
List	/uss/olp/qnr/EgovQustnrRespondInfoManageListView.mdo	EgovQustnrRespondInfoManageListView	
Store	/uss/olp/qnr/EgovQustnrRespondInfoManageRegistActor.mdo	EgovQustnrRespondInfoManageRegistActor	"QustnrRespondInfoManage.insertQustnrRespondInfo"



Back: moves to Questionnaire Participation list inquiry screen.  
 Registration: the entered Questionnaire Participation information is stored.  
 List: moves to Questionnaire Participation list inquiry screen.

## Questionnaire Statistics

### Business rules

Show results per question and statistical data in the graphic format.

### Related codes

N/A

### Screen and execution manual

#### Questionnaire Participation Statistics

Action	URL	Controller method	QueryID
List	/uss/olp/qnr/EgovQustnrRespondInfoManageStatistics.mdo	EgovQustnrRespondInfoManageStatistics	"QustnrRespondInfo.selectQustnrTmplatManages"
			"QustnrRespondInfo.selectQustnrRespondInfoManageComtnqstnrinfo"
			"QustnrRespondInfo.selectQustnrRespondInfoManageComtnqstnrqesitm"
			"QustnrRespondInfo.selectQustnrRespondInfoManageComtnqstnrriem"
			"QustnrRespondInfo.selectQustnrRespondInfoManageStatistics1"
			"QustnrRespondInfo.selectQustnrRespondInfoManageStatistics2"



Back: moves to Questionnaire Participation list inquiry screen.

List: moves to Questionnaire Participation list inquiry screen.

## Settings and Notes

\* The currently distributed mobile common component adopts HTML5 and CSS3 and this means that it doesn't support the standards for mobile web site validity check of Mobile OK and W3C. For details on correct validity check, please contact the competent professional institute.

\* Security verification is under progress on the currently distributed mobile component. We plan to complete security verification as soon as possible to release a new security-patched version.

## References

- Refer to Questionnaire Template Management (existing web version): [Questionnaire Template Management](#)
  - Refer to Questionnaire Management (existing web version): [Questionnaire Management](#)
  - Refer to Questionnaire Question Management (existing web version): [Questionnaire Question Management](#)
  - Refer to Questionnaire Item Management (existing web version): [Questionnaire Item Management](#)
  - Refer to Questionnaire Responder Management (existing web version): [Questionnaire Responder Management](#)
  - Refer to Questionnaire Survey(results) Management (existing web version): [Questionnaire Survey\(results\) Management](#)
  - Refer to Questionnaire Participation (existing web version): [Questionnaire Participation](#)
- Distribution and test: [Mobile Common Component System](#) and [distribution package plan](#)