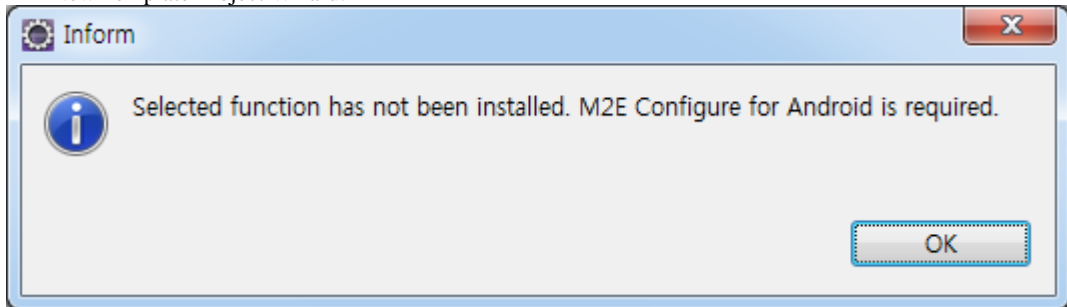


How to install Android Configurator for M2E

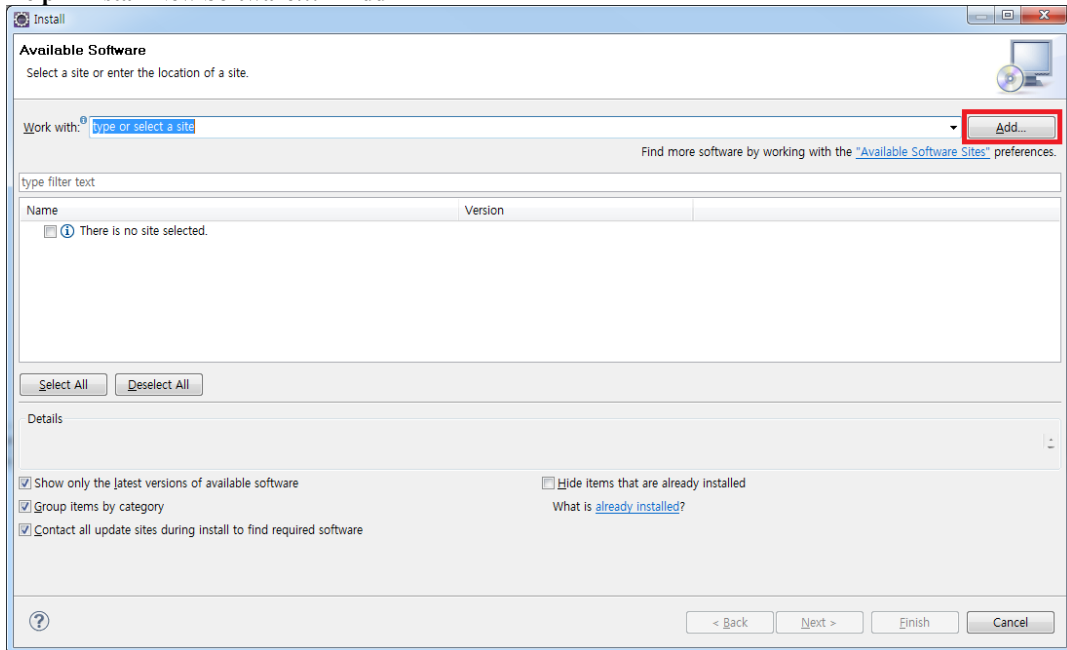
Description

- Make sure the m2e plug-in with Maven3 is installed
- for activation of the maven-generate life cycle.
- When Android Configurator for M2E is not available, you will encounter the following error message in Device API New Template Project Wizard.

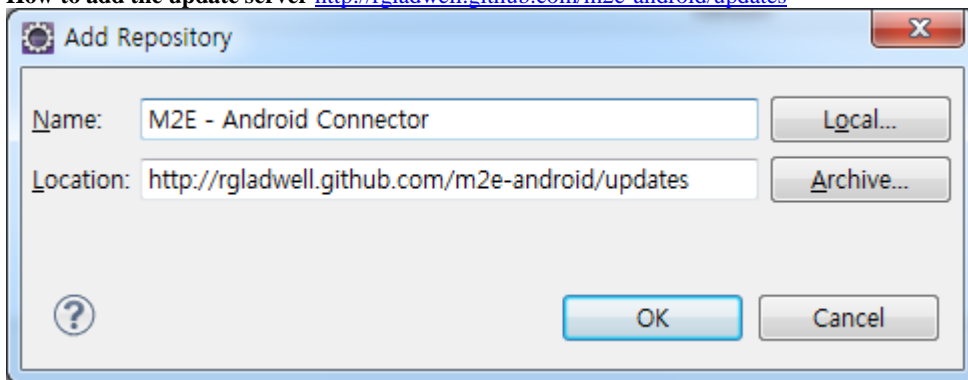


Install Plug-in

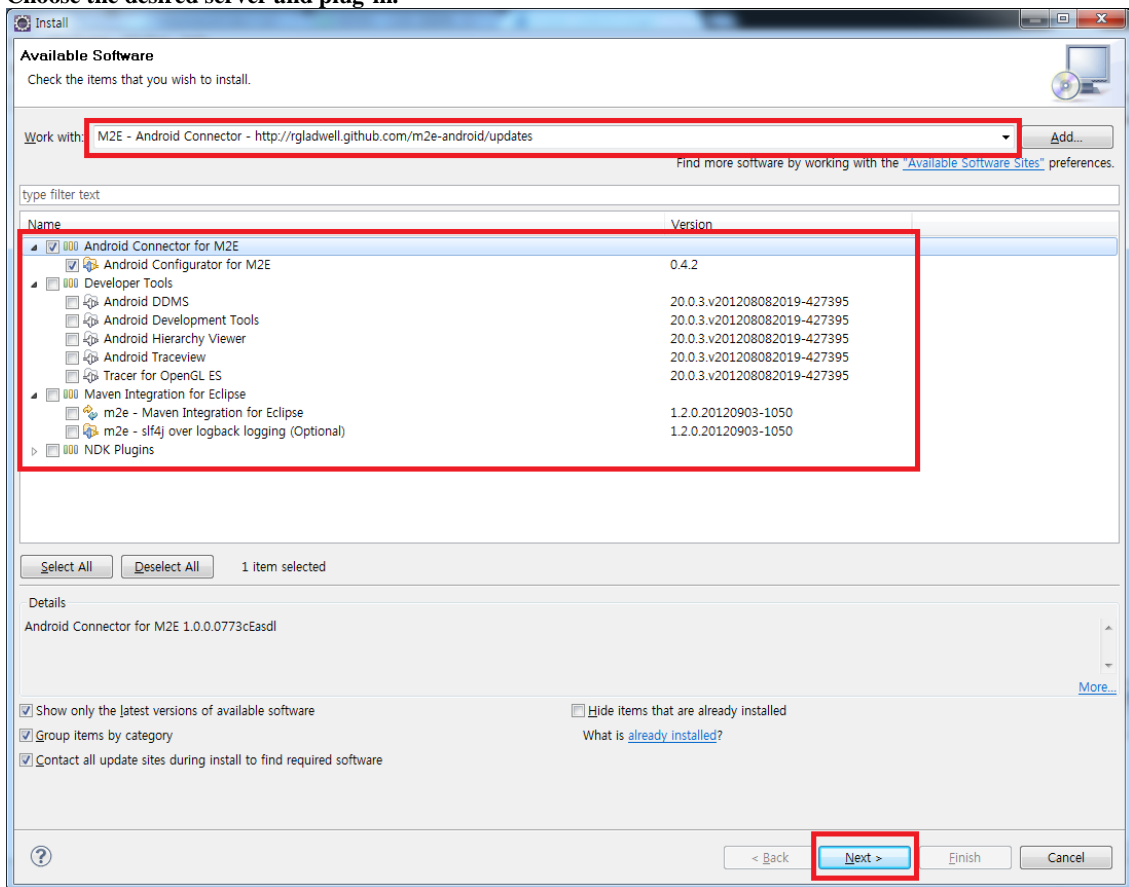
1. **Help > Install New Software... > Add**



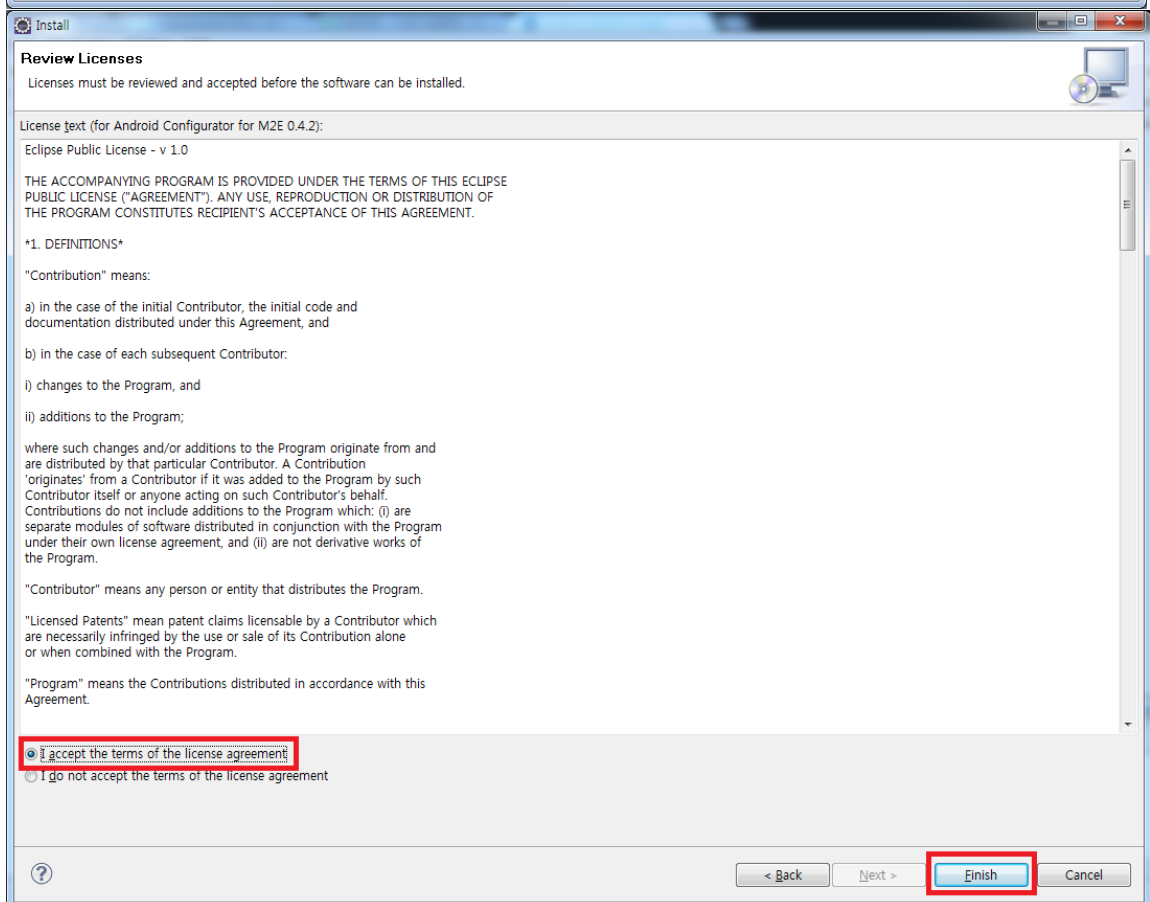
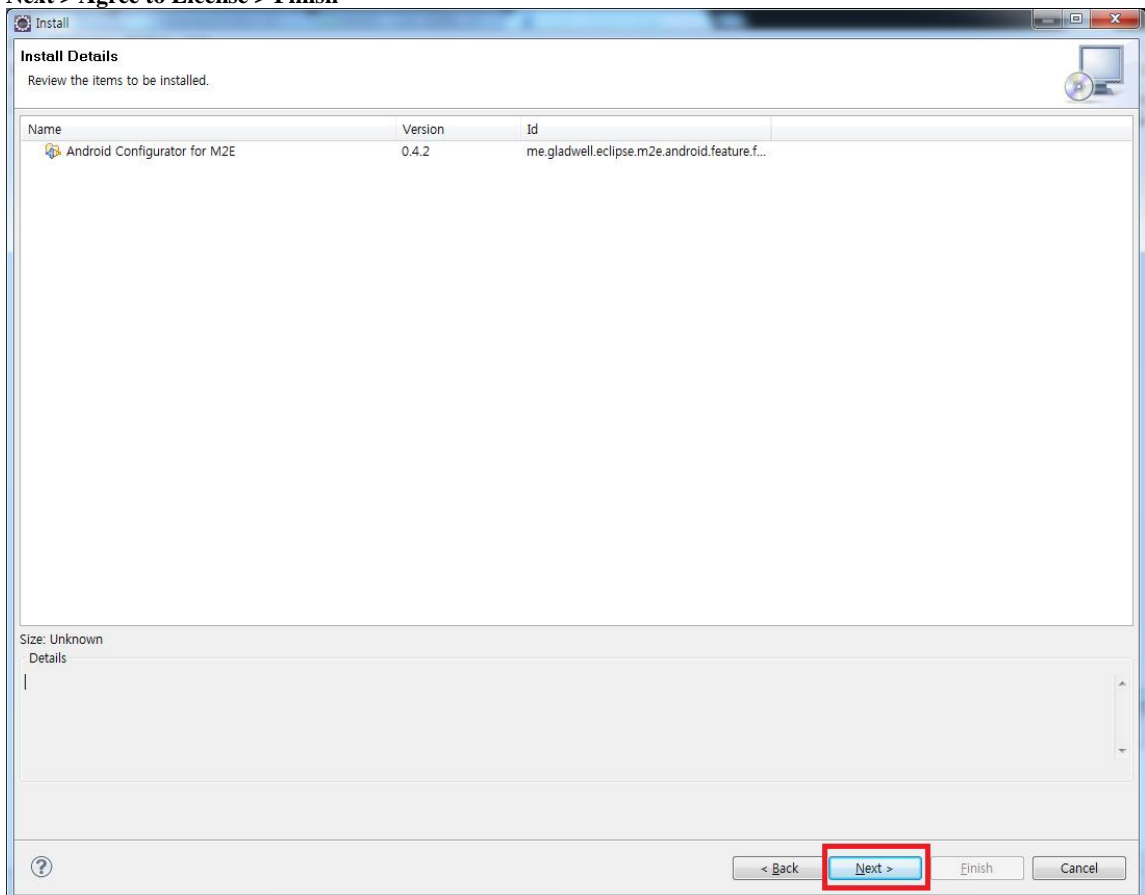
2. **How to add the update server** <http://rgladwell.github.com/m2e-android/updates>



3. **Choose the desired server and plug-in.**



4. **Next > Agree to License > Finish**



5. Proceed with installation and restart the developmental environment

