

Add Template Wizard for Device API

Outline

- The runtime environment for eGovFramework Mobile Device API provides the developers with the mobile device API template project conversion wizard that can be referred to for mobile application development.

Description

- The runtime environment of eGovFramework Mobile Device API uses the conventional Android Project for conversion into the standard codings and guidance programs for both mobile applications and server applications.
- The Wizard provides the developers with conversion into Standard Codings for the runtime environment of Mobile Device API, **Standard Sample Template, and Generate Guide Program Project.**

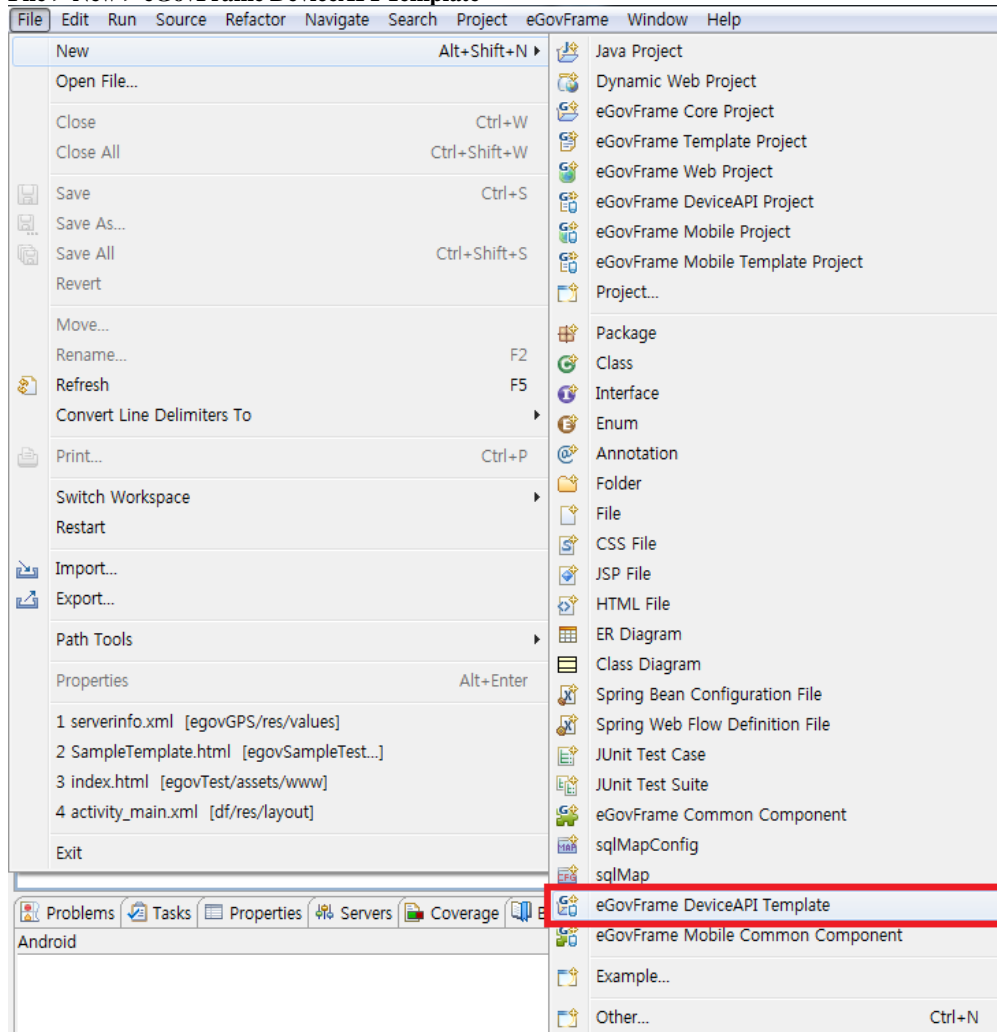
1. **Choose the existing Android application project.**
2. **Select Template**(Template Type) - **Choose**
3. **Configure for a server application development project.** (Title of Project, Maven Configuration) - **Choose**
4. **Generate a Table in the customized DB.** (Generate DB Access and Table) - **Choose**

- Note that the Wizard cannot get the project re-converted back.

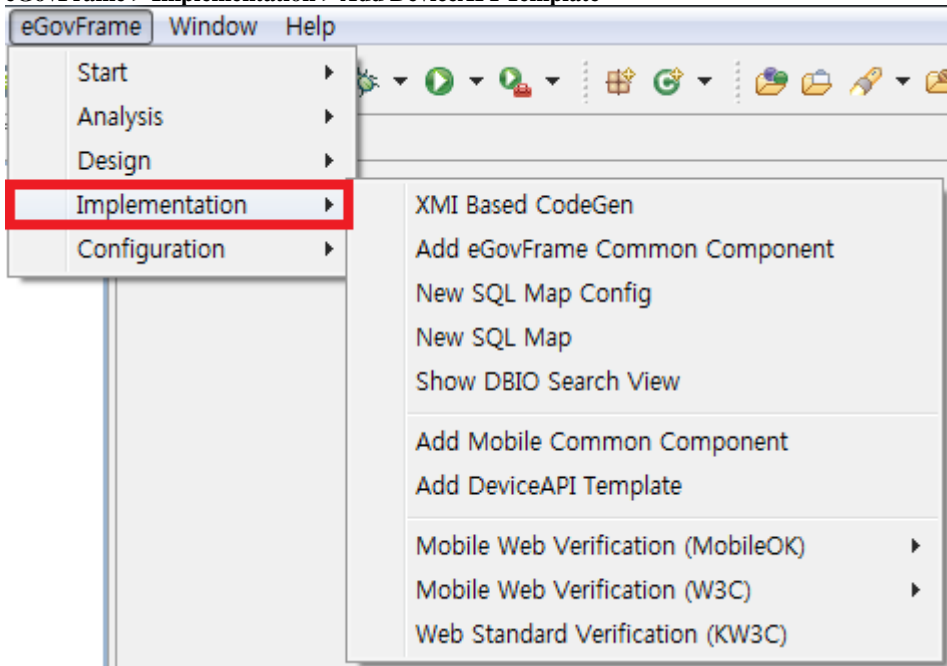
How to Use

Getting Started

- **File > New > eGovFrame DeviceAPI Template**



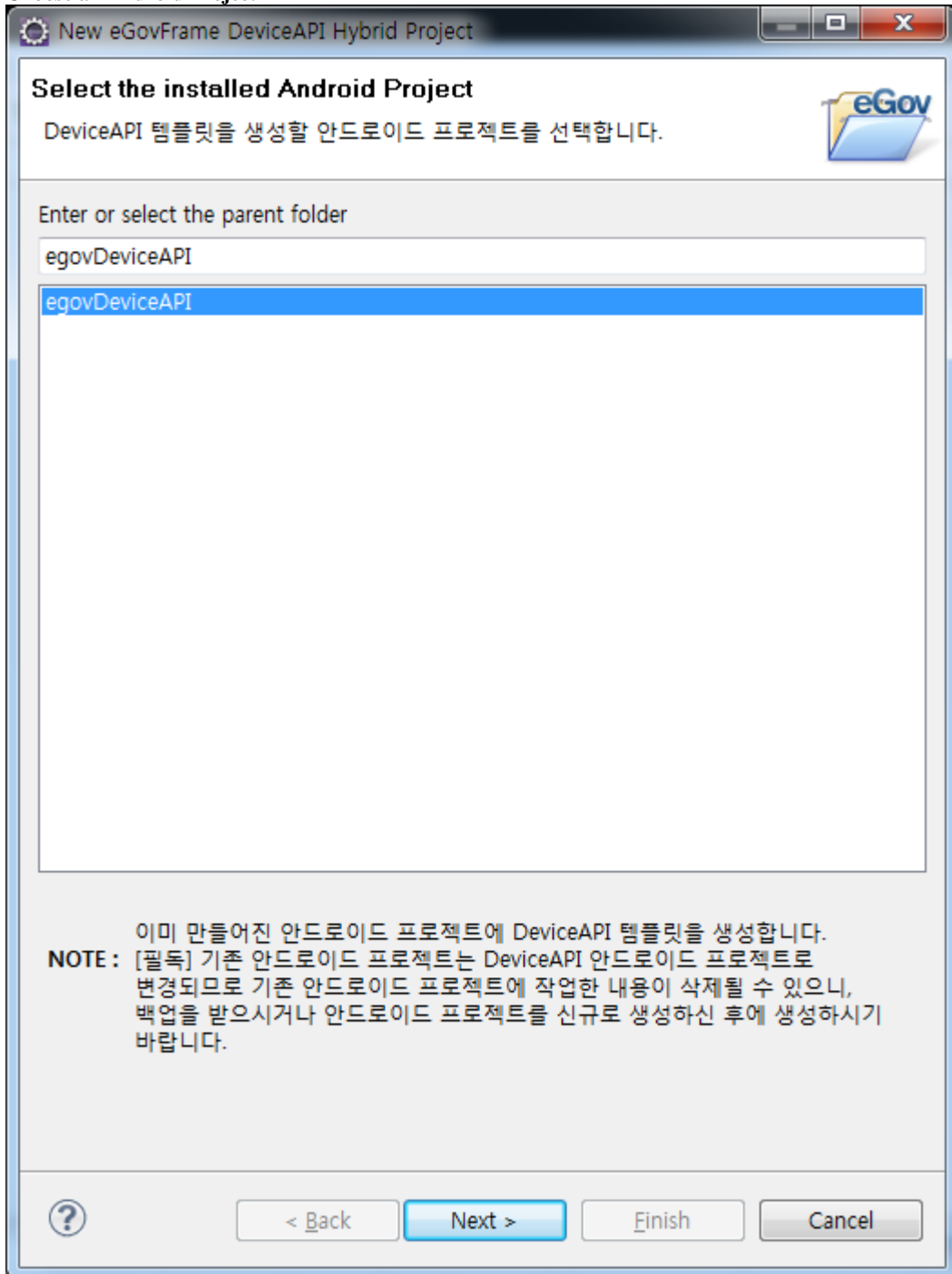
- **eGovFrame > Implementation > Add DeviceAPI Template**



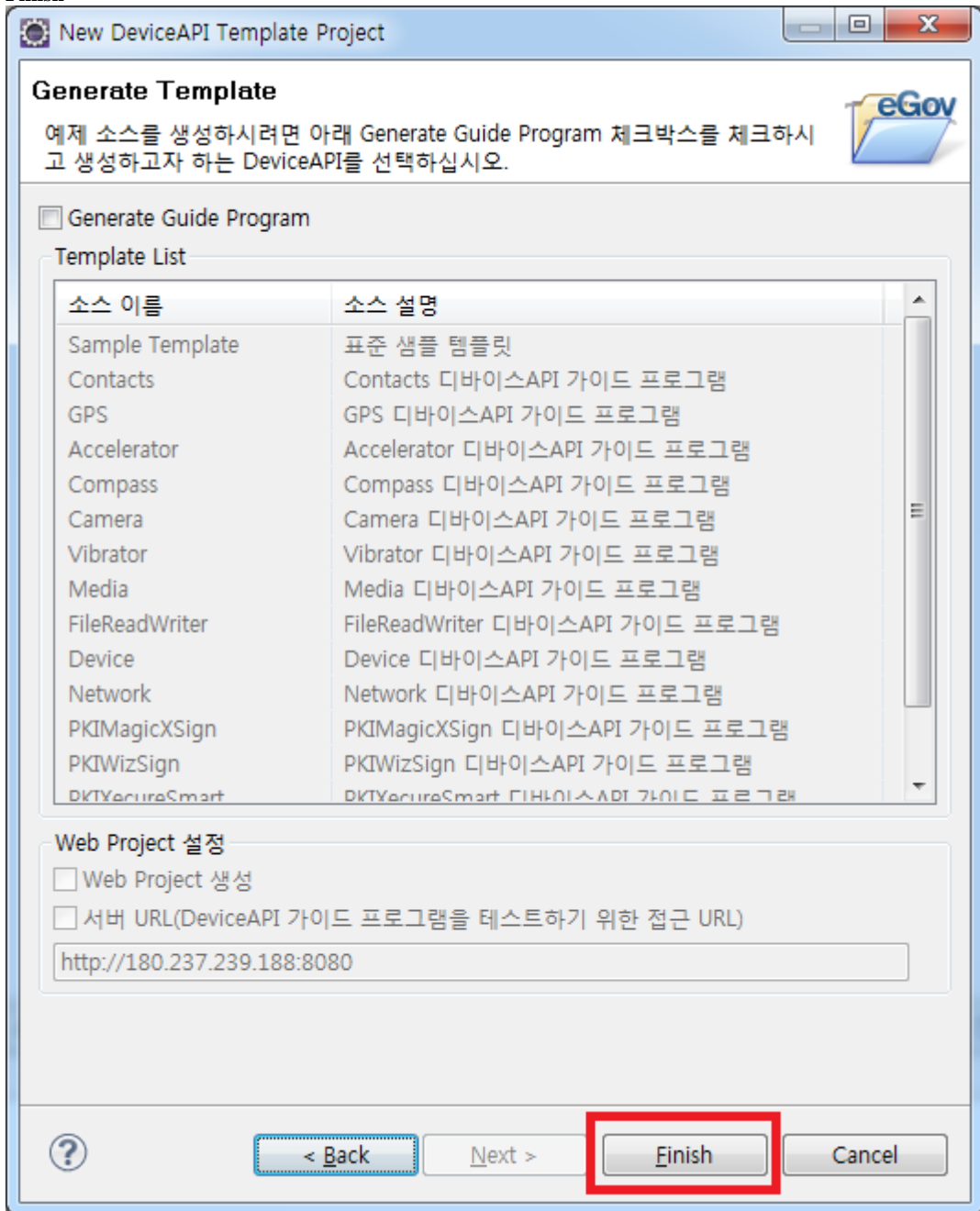
Convert Project

Convert and Generate Device API Runtime Environment Code Project

1. **Choose an Android Project**

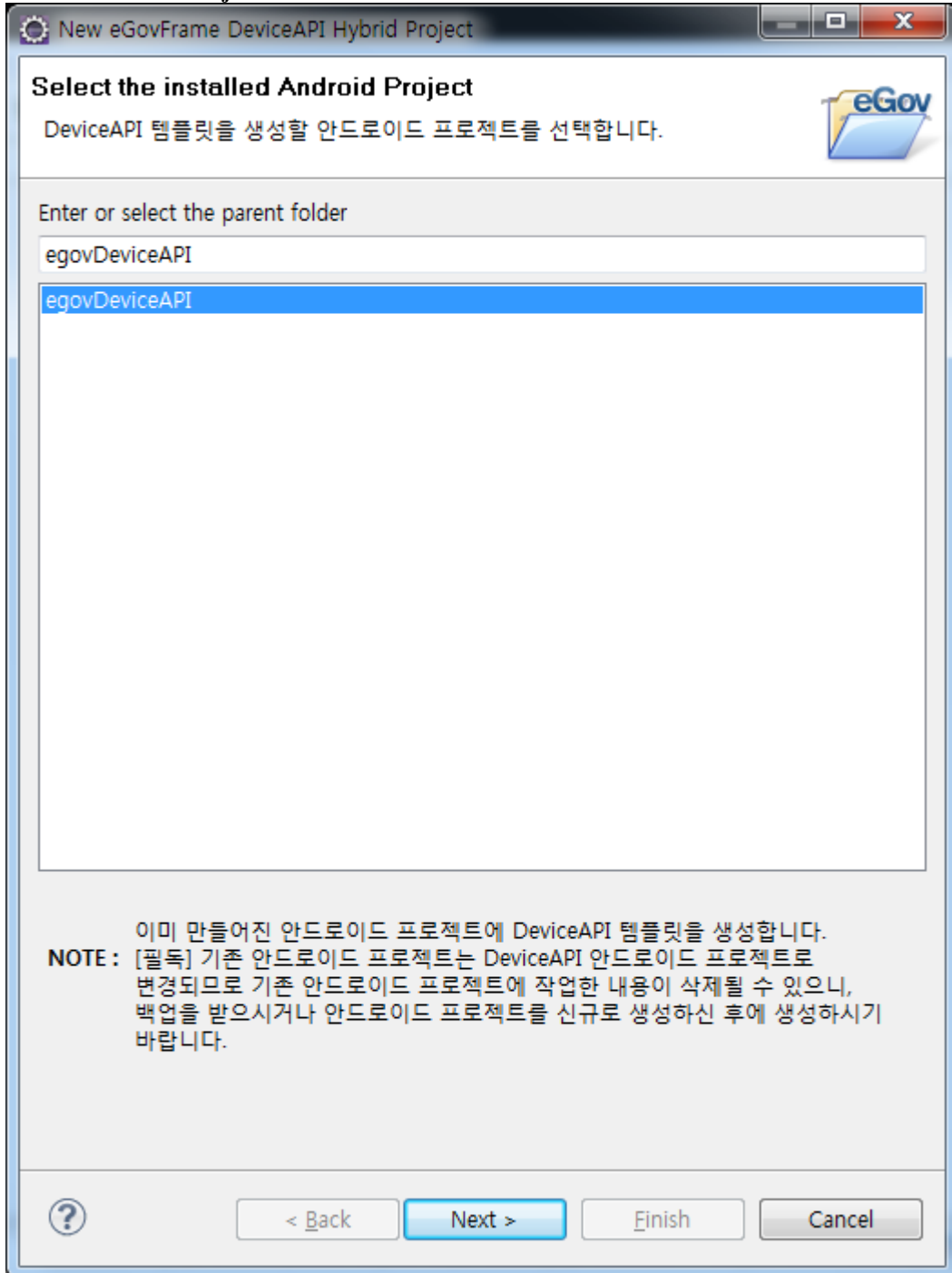


2. **Finish**

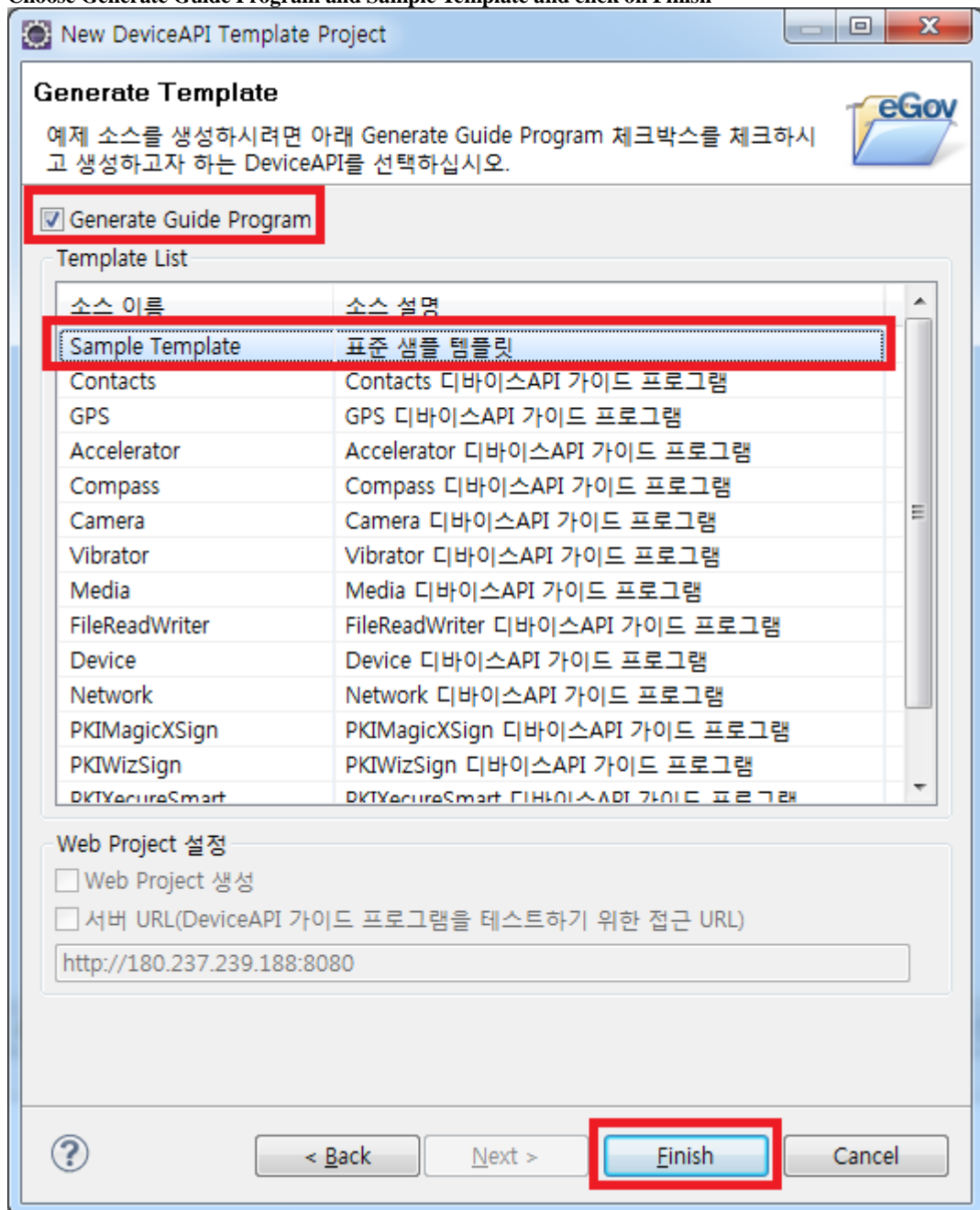


Convert and Generate Device API Runtime Environment coding project

1. Choose an Android Project



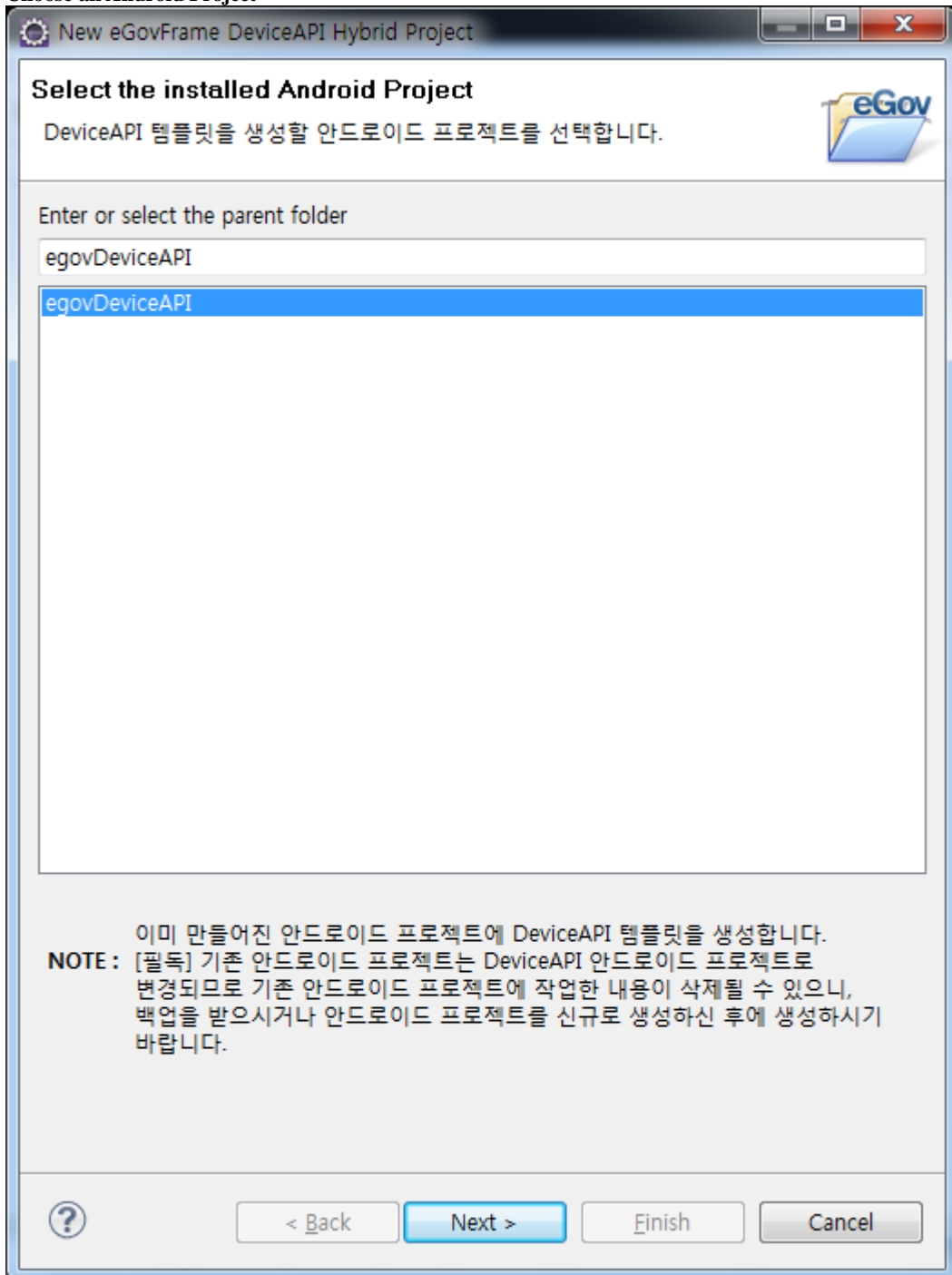
2. Choose Generate Guide Program and Sample Template and click on Finish



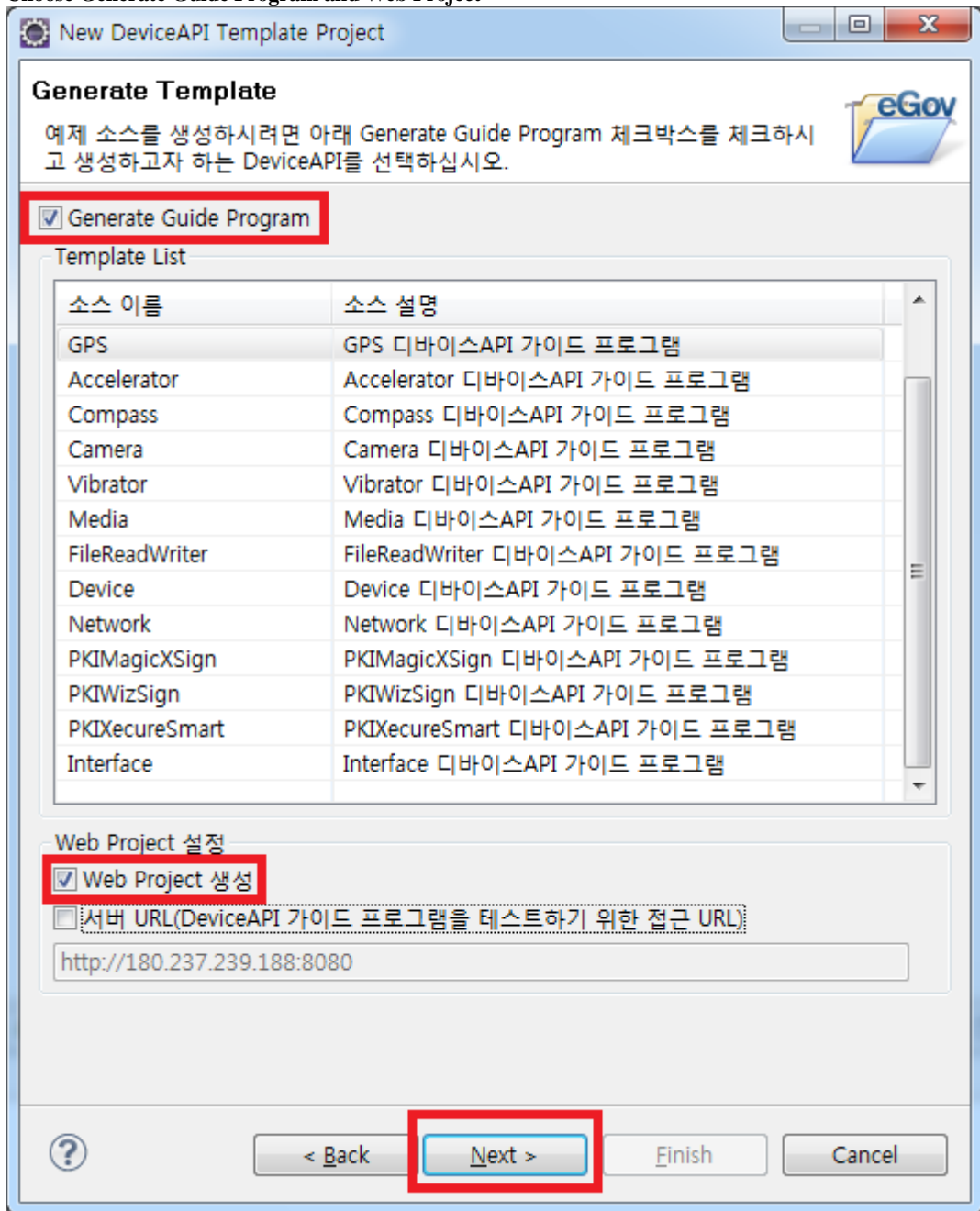
Convert and Generate Device API Runtime Environment guidance program project

- Where necessary, you can either generate the Web Project in eGovStandard Framework 2.0
- or cause the server information registered in Device API Mobile Application to be developed by way of Server URL when you don't want to develop a Web Project.
- Note that a Web Project, once generated, covers the entirety of 15 eGovframework Device API Guide Programs.

1. Choose an Android Project



2. Choose Generate Guide Program and Web Project



3. **Input Project Name and Configure Maven**

New DeviceAPI Template Project

eGovFrame DeviceAPI Web Project
DeviceAPI 가이드 프로그램을 테스트하기 위한 웹 프로젝트를 생성합니다.

Project name : egovDeviceWeb

Contents

Use default Workspace location

Location: C:\test\workspace\egovDeviceWeb Browse...

Target Runtime

<None> New...

Dynamic Web Module version

2.5

DeviceAPI Device Application

Group Id : egovDeviceWeb

Artifact Id : egovDeviceWeb

Version : 1.0.0

Select Table Creation Type

생성하지 않음(기본설치)

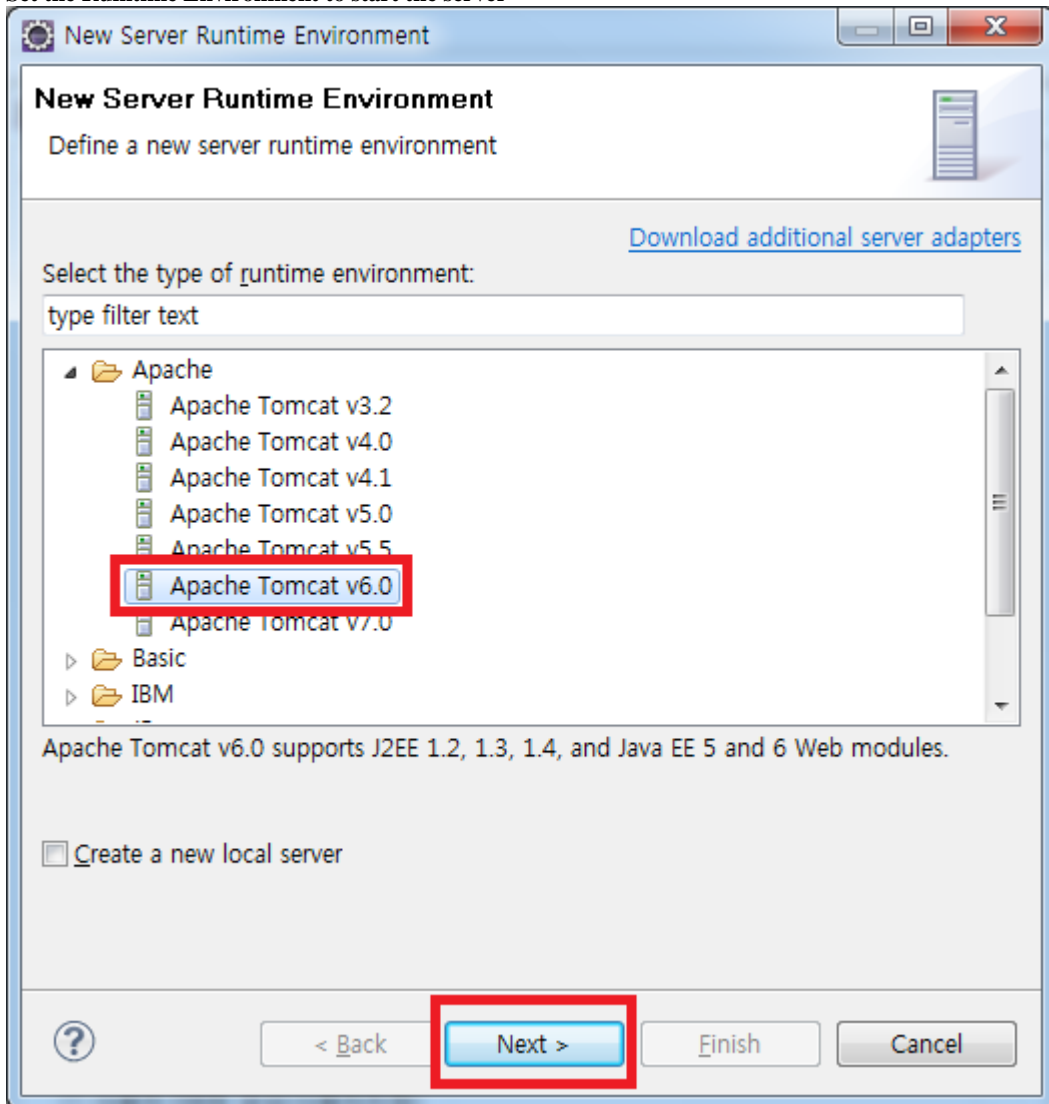
사용자 DB에 생성(사용자지정)

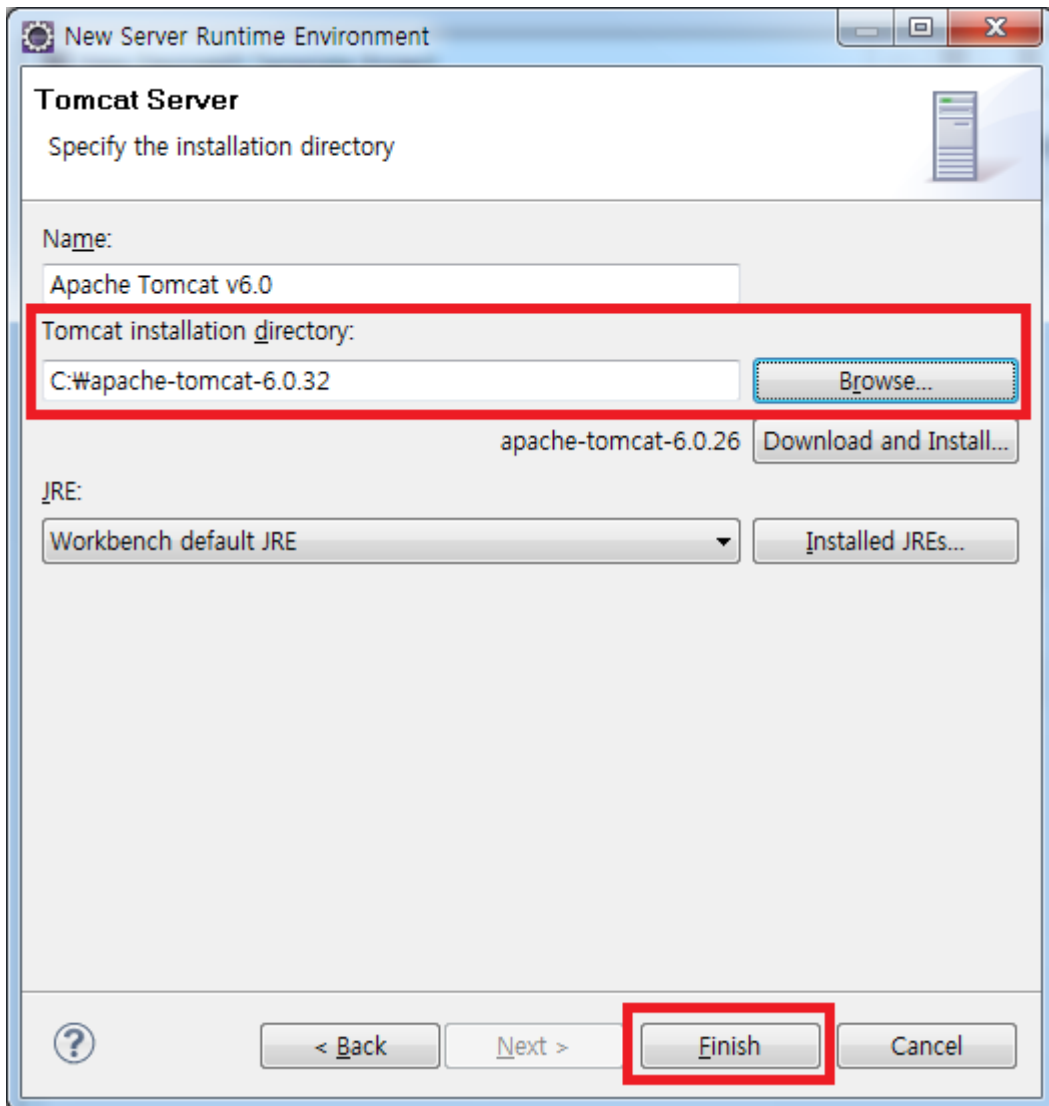
설명

테이블을 생성하지 않고 소스만 생성합니다.

< Back Next > Finish Cancel

4. **Set the Runtime Environment to start the server**





5. **Generate a Project**

New DeviceAPI Template Project

eGovFrame DeviceAPI Web Project

DeviceAPI 가이드 프로그램을 테스트하기 위한 웹 프로젝트를 생성합니다.

Project name : egovDeviceWeb

Contents

Use default Workspace location

Location: C:\test\workspace\egovDeviceWeb Browse...

Target Runtime

Apache Tomcat v6.0 New...

Dynamic Web Module version

2.5

DeviceAPI Device Application

Group Id : egovDeviceWeb

Artifact Id : egovDeviceWeb

Version : 1.0.0

Select Table Creation Type

생성하지 않음(기본설치)

사용자 DB에 생성(사용자지정)

설명

테이블을 생성하지 않고 소스만 생성합니다.

Finish

Generate a Table in the customized DB

- While generating a Web Project, you can generate the table intended for access to guidance program database.
- [See Introduction to Data Source Explorer for more information.](#)
- Note that eGovFramework is compatible with **MySQL, Oracle, Altibase and Tiberio**.

1. Choose Generate (Custom) in User DB.

New DeviceAPI Template Project

eGovFrame DeviceAPI Web Project

DeviceAPI 가이드 프로그램을 테스트하기 위한 웹 프로젝트를 생성합니다.

Project name : egovDeviceWeb

Contents

Use default Workspace location

Location: C:\test\workspace\egovDeviceWeb

Target Runtime

Apache Tomcat v6.0

Dynamic Web Module version

2.5

DeviceAPI Device Application

Group Id : egovDeviceWeb

Artifact Id : egovDeviceWeb

Version : 1.0.0

Select Table Creation Type

생성하지 않음(기본설치)

사용자 DB에 생성(사용자지정)

설명

사용자 DB 테이블 생성 페이지로 이동합니다.

< Back Next > Finish Cancel

2. In DatabaseSource Explorer, Choose the DB Access Information and try out testing.

New DeviceAPI Template Project

Customize Table Creation

DeviceAPI 가이드 프로그램에서 사용하는 테이블을 생성합니다.

Select DB : **New MySQL**

Datasource

DB Type : mySql

Driver Class Name : com.mysql.jdbc.Driver

URL : [Redacted]

User name : [Redacted]

PassWord : [Redacted]

Connection Test Create Table

Create Table

테이블명	설치 결과	테이블 설명
FILE_DETAIL_INFO		파일 상세 정보 관리
ACCELERATOR		가속도 정보 관리
CAMERA		이미지 정보 관리
CODE		공통 코드
COMTECOPSEQ		Id Generation 관리
COMPASS		방향 정보 관리
CONTACT_INFO		연락처 정보 관리

< Back Next > Finish Cancel

3. When the access to database has been established, create a table.

The screenshot shows a window titled "New DeviceAPI Template Project" with a sub-dialog titled "Customize Table Creation". The eGov logo is in the top right corner. A red box highlights a message: "Database에 성공적으로 접속하였습니다." (Successfully connected to the database).

Below the message, the "Select DB" dropdown is set to "New MySQL". The "Datasource" section contains the following fields:

- DB Type: mySql
- Driver Class Name: com.mysql.jdbc.Driver
- URL: [Redacted]
- User name: [Redacted]
- PassWord: [Redacted]

At the bottom right of the Datasource section, there are two buttons: "Connection Test" and "Create Table". The "Create Table" button is highlighted with a red box.

The "Create Table" section contains a table with the following data:

테이블명	설치 결과	테이블 설명
FILE_DETAIL_INFO		파일 상세 정보 관리
ACCELERATOR		가속도 정보 관리
CAMERA		이미지 정보 관리
CODE		공통 코드
COMTECOPSEQ		Id Generation 관리
COMPASS		방향 정보 관리
CONTACT_INFO		연락처 정보 관리

At the bottom of the dialog, there are navigation buttons: "?", "< Back", "Next >", "Finish", and "Cancel".

4. **Generate a Project.**

New DeviceAPI Template Project

Customize Table Creation

i Database에 성공적으로 접속하였습니다.

Select DB : New MySQL

Datasource

DB Type : mySql

Driver Class Name : com.mysql.jdbc.Driver

URL : [REDACTED]

User name : [REDACTED]

PassWord : [REDACTED]

Connection Test **Create Table**

Create Table

테이블명	설치 결과	테이블 설명
FILE_DETAIL_INFO	Already Exist	파일 상세 정보 관리
ACCELERATOR	Already Exist	가속도 정보 관리
CAMERA	Already Exist	이미지 정보 관리
CODE	Already Exist	공통 코드
COMTECOPSEQ	Already Exist	Id Generation 관리
COMPASS	Already Exist	방향 정보 관리
CONTACT_INFO	Already Exist	연락처 정보 관리

? < Back Next > **Finish** Cancel

Check the Project is generated and run without trouble.

- Check the mobile application project and web project are generated in Device API.

